

**ACTUATOR
UNITS**

NEW

Press series

PCT/PC



For details, visit THK at www.thk.com

* Product information is updated regularly on the THK website.

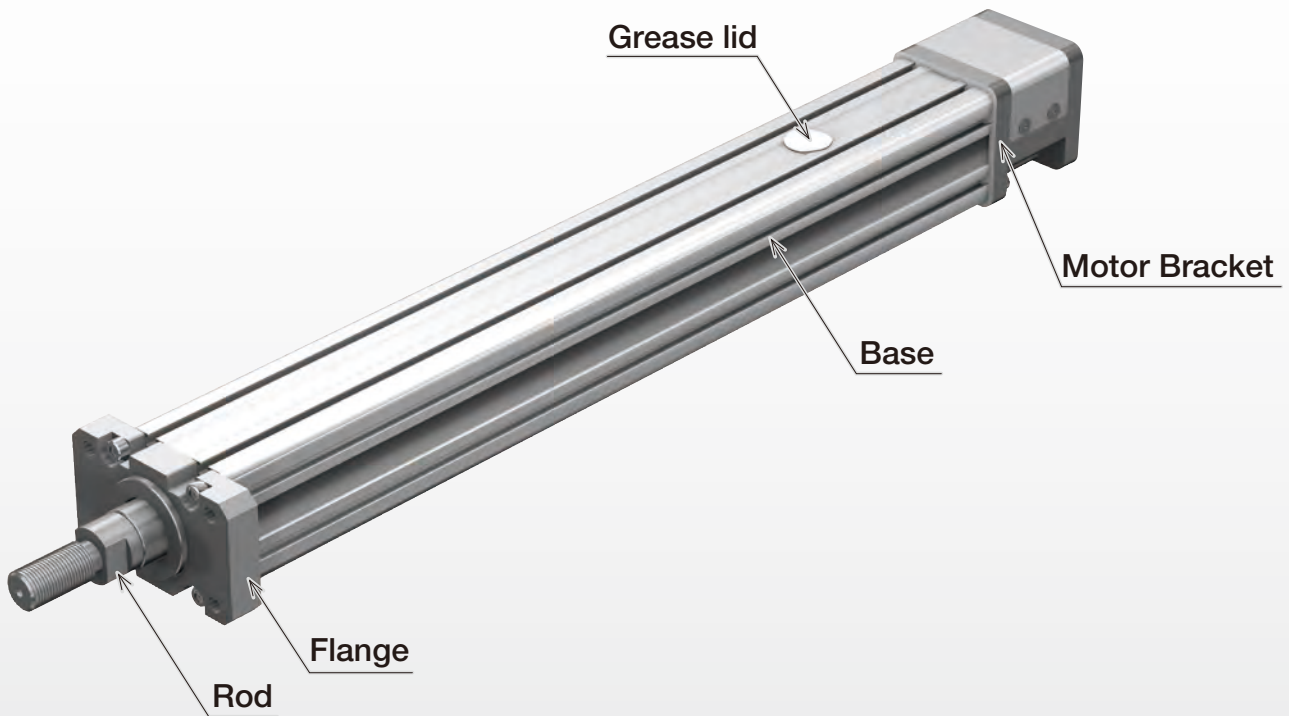
THK CO., LTD.
TOKYO, JAPAN

CATALOG No.379-11E

Electrical Actuator
Press Series

PCT

Cylinder-type Actuator with Ball Screw



Features

Press actuator

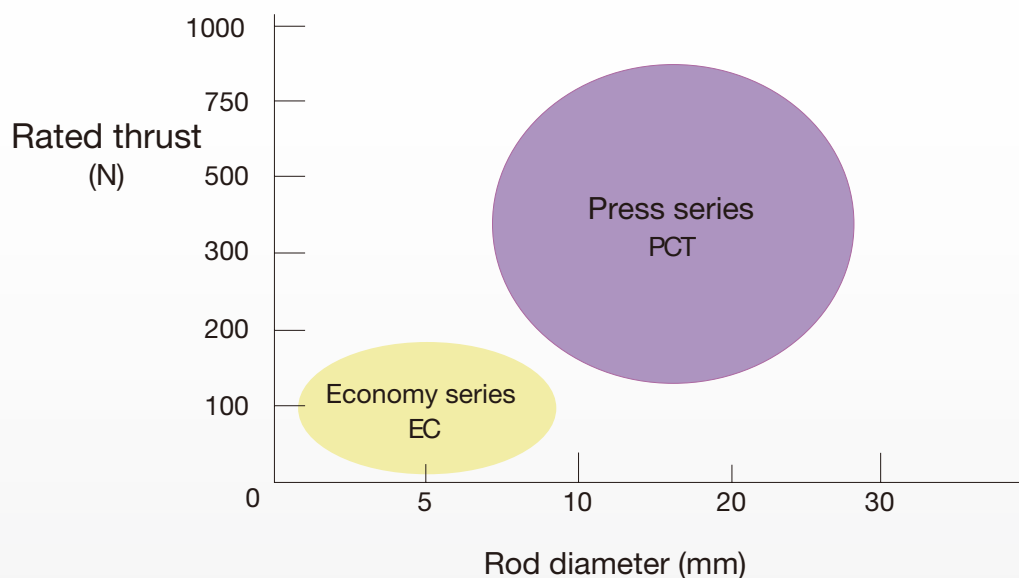
This actuator offers superior axial load rigidity and is thus available for use in a small press fitting and caulking machine.

Motorized

A motorized mechanism is employed instead of an air cylinder, reducing process time, increasing accuracy, and providing multi-point positioning, for improved productivity.

Many possible variations

A combination of ball screw lead and motor capacity allows you to select products suited to your needs from five types of variations with rated thrusts ranging from about 100 to 800N.

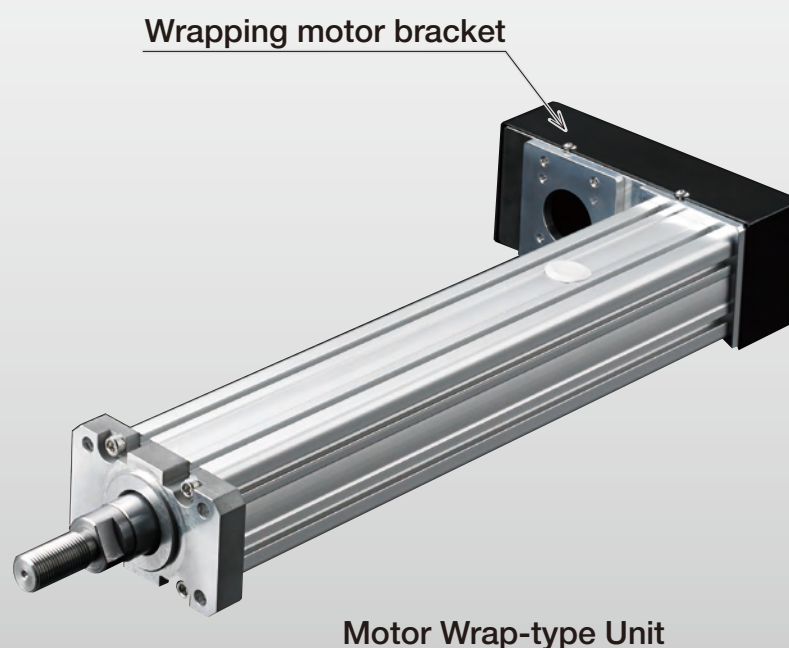


Flexible device design

PCT can support any installation direction through the use of a flange or T slot on the main unit.

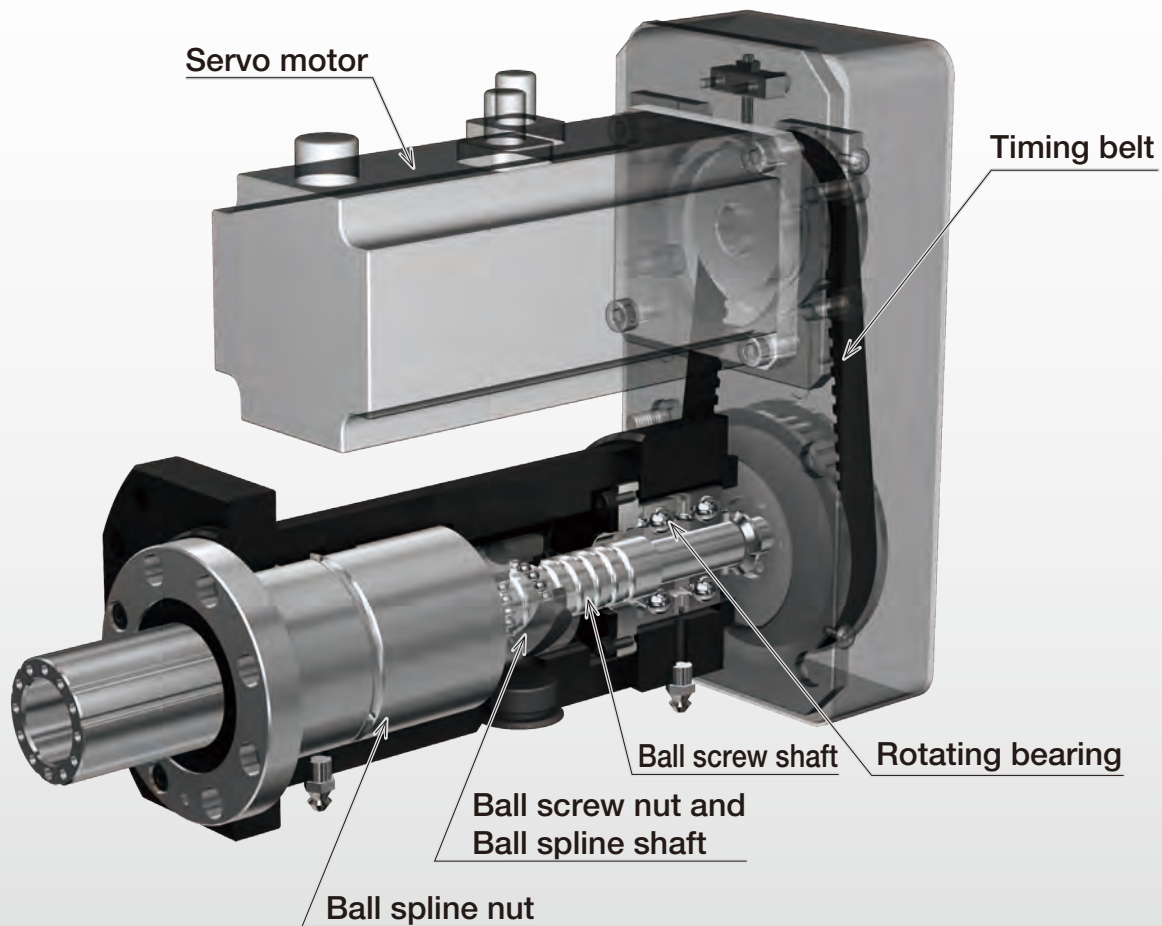
Motor installation is also possible by direct coupling or Wrap.

(When a radial load and moment load are applied to the rod, a guide must be installed separately.)



Electrical Actuator
Press Series
PC

Compact, High-precision, High-rigidity Servo Press Actuator

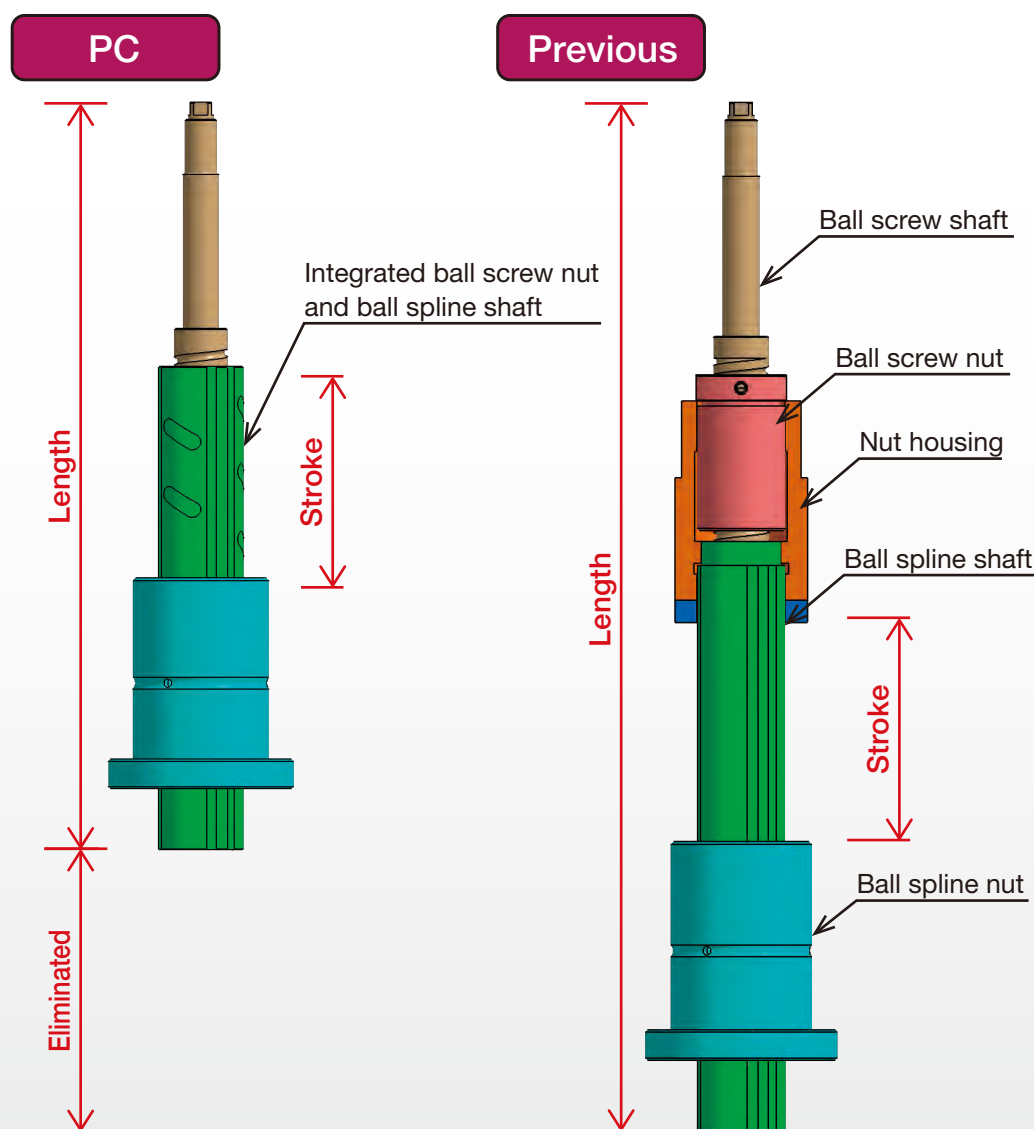


A servo press actuator with a new structure incorporating a precision ball screw nut and ball spline shaft, providing a compact unit that delivers high thrust.

Features

Compact structure

The new integrated structure, incorporating a precision ball screw nut and ball spline shaft, significantly reduces the product length, making the unit much more compact.



30% less length (when stroke is 50mm)
(Compared to our previous product)

Designed to withstand compressive loads

The bearing arrangement provides high resistance against compressive loads.

High load capacity

The ball screw shaft diameter and loaded circuitry have been maximized to enable high load capacity.

High rigidity

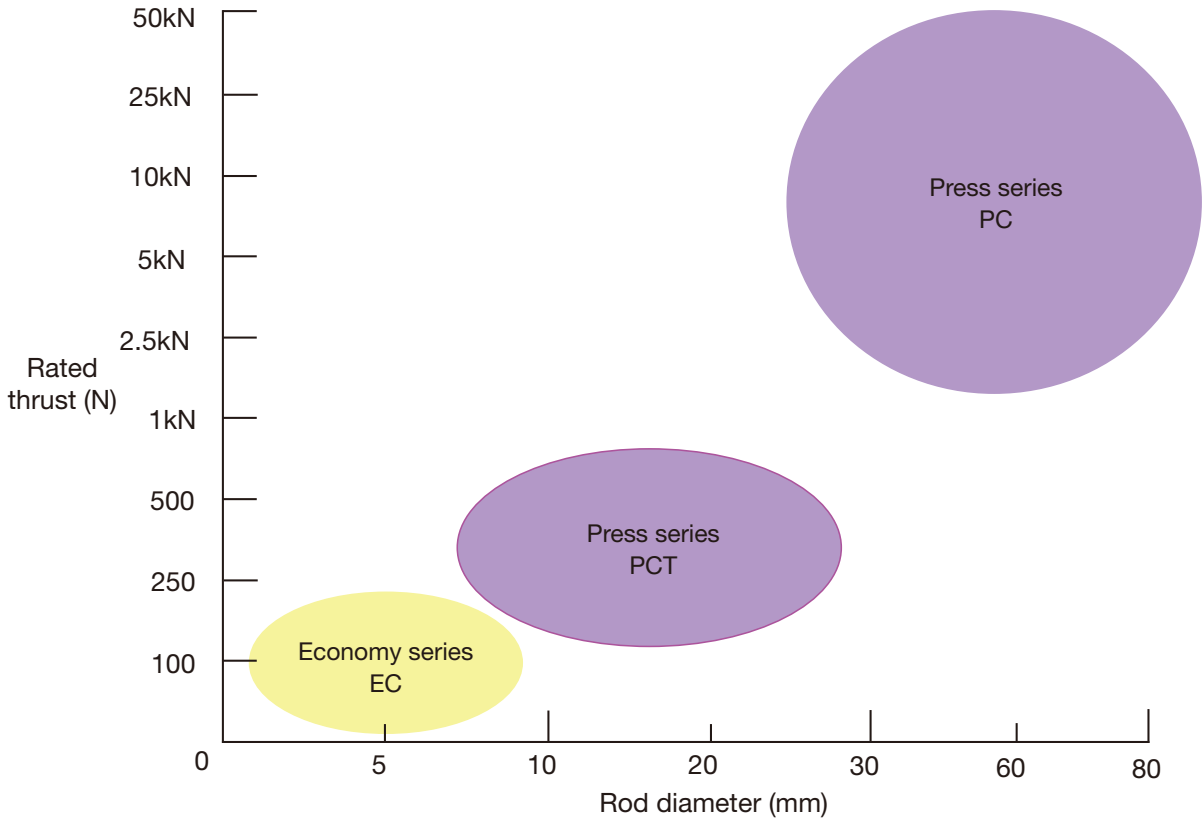
The Ball Spline Model LF enables smooth movement without clearance, providing a guide with high rigidity.

High feed precision

The feed mechanism employs a precision ball screw, providing superior feed precision.

Specifications

Cylinder-type Products



PCT

| Model | Motor rated output [W] | Rated thrust [N] | Maximum speed [mm/s] | Maximum stroke [mm] | Generated thrust [N] | | | | | | | |
|------------|------------------------|------------------|----------------------|---------------------|----------------------|------|-----|-----|------|------|------|------|
| | | | | | 0 | 100 | 250 | 500 | 1000 | 1500 | 2500 | 5000 |
| PCT20-06N | 50 | 133 | 300 | 200 | 130 | 402 | | | | | | |
| PCT20R-06N | | | | | | | | | | | | |
| PCT25-06N | 100 | 266 | 200 | 300 | 260 | 796 | | | | | | |
| PCT25R-06N | | | | | | | | | | | | |
| PCT25-04N | | | | | | | | | | | | |
| PCT25R-04N | 200 | 400 | 300 | 300 | 400 | 1194 | | | | | | |
| PCT25-06N | | | | | | | | | | | | |
| PCT25R-06N | | | | | | | | | | | | |
| PCT25-04N | | | | | | | | | | | | |
| PCT25R-04N | 200 | 536 | 300 | 300 | 500 | 1600 | | | | | | |
| PCT25-06N | | | | | | | | | | | | |
| PCT25R-06N | 200 | 804 | 200 | 300 | 800 | 2400 | | | | | | |
| PCT25-04N | | | | | | | | | | | | |
| PCT25R-04N | | | | | | | | | | | | |

- Rated thrust
- Instantaneous maximum thrust

Note) contact THK before attempting a pressing operation with generated thrust above the rated thrust and below the instantaneous maximum thrust.

PC

| Model | Instantaneous maximum thrust [kN] | Servo motor | | Rated thrust [kN] | Maximum speed [mm/s] | Maximum stroke [mm] | Generated thrust [kN] | | | | | | | | | | | | |
|-----------|-----------------------------------|---------------------------------|-------------------|-------------------|----------------------|---------------------|-----------------------|---|---|---|-----|----|----|----|----|----|----|----|-----|
| | | Manufacturer | Rated output [kW] | | | | 0 | 1 | 2 | 3 | 7.5 | 10 | 15 | 20 | 30 | 40 | 50 | 70 | 100 |
| PC30-06A | 3.3 | Mitsubishi Electric Corporation | 0.4 | 1.6 | 210 | 250 | 1.6 | | | | | | | | | | | | |
| | | Yaskawa Electric Corporation | | | | | 3.3 | | | | | | | | | | | | |
| | | Sanyo Denki Co., Ltd. | | | | | | | | | | | | | | | | | |
| PC40-06B | 6.4 | Mitsubishi Electric Corporation | 0.75 | 3.2 | 200 | 250 | 3.2 | | | | | | | | | | | | |
| | | Yaskawa Electric Corporation | | | | | 6.4 | | | | | | | | | | | | |
| | | Sanyo Denki Co., Ltd. | | | | | | | | | | | | | | | | | |
| PC40H-08C | 11.2 | Mitsubishi Electric Corporation | 1.0 | 5.6 | 151 | 250 | 5.6 | | | | | | | | | | | | |
| | | Yaskawa Electric Corporation | 0.85 | 6.3 | 113 | | 6.3 | | | | | | | | | | | | |
| | | Sanyo Denki Co., Ltd. | 1.2 | 6.7 | 151 | | 6.7 | | | | | | | | | | | | |
| PC50-06D | 16.8 | Mitsubishi Electric Corporation | 1.5 | 8.4 | 150 | 250 | 8.4 | | | | | | | | | | | | |
| | | Yaskawa Electric Corporation | 1.3 | 9.8 | 112 | | 9.8 | | | | | | | | | | | | |
| | | Sanyo Denki Co., Ltd. | 1.8 | 10.2 | 150 | | 10.2 | | | | | | | | | | | | |
| PC60-10E | 21.8 | Mitsubishi Electric Corporation | 2.0 | 10.9 | 155 | 250 | 10.9 | | | | | | | | | | | | |
| | | Yaskawa Electric Corporation | 1.8 | 13.1 | 116 | | 13.1 | | | | | | | | | | | | |
| | | Sanyo Denki Co., Ltd. | 2.0 | 10.9 | 155 | | 10.9 | | | | | | | | | | | | |
| PC60H-10F | 35.6 | Mitsubishi Electric Corporation | 3.5 | 17.8 | 166 | 250 | 17.8 | | | | | | | | | | | | |
| | | Yaskawa Electric Corporation | 2.9 | 19.8 | 125 | | 19.8 | | | | | | | | | | | | |
| | | Sanyo Denki Co., Ltd. | 3.5 | 18.1 | 166 | | 18.1 | | | | | | | | | | | | |
| PC80L-12G | 71 | Mitsubishi Electric Corporation | 5 | 24 | 177 | 250 | 24 | | | | | | | | | | | | |
| | 71 | Yaskawa Electric Corporation | 4.4 | 28 | 133 | | 28 | | | | | | | | | | | | |
| | 75 | Sanyo Denki Co., Ltd. | 4.5 | 21 | 177 | | 21 | | | | | | | | | | | | |
| PC80-12G | 100 | Mitsubishi Electric Corporation | 7 | 33 | 177 | 250 | 33 | | | | | | | | | | | | |
| | 102 | Yaskawa Electric Corporation | 5.5 | 35 | 133 | | 35 | | | | | | | | | | | | |
| | 107 | Sanyo Denki Co., Ltd. | 5.5 | 35 | 133 | | 35 | | | | | | | | | | | | |
| PC80H-12G | 120 | Mitsubishi Electric Corporation | 4.2 | 40 | 88 | 250 | 40 | | | | | | | | | | | | |
| | | Yaskawa Electric Corporation | 7.5 | 48 | 133 | | 48 | | | | | | | | | | | | |
| | | Sanyo Denki Co., Ltd. | 7.5 | 48 | 133 | | 48 | | | | | | | | | | | | |

- Rated thrust
- Instantaneous maximum thrust

Note) contact THK before attempting a pressing operation with generated thrust above the rated thrust and below the instantaneous maximum thrust.

PCT Model Configuration (Types without Motor)

| Model | Lead, reduction ratio | Stroke | Options | With/without motor | Motor Bracket | Motor shaft fixing method |
|--------------------------|---|--------------|--|--------------------|---|---|
| PCT20R | 06N | 0200 | R | 0 | A1 | D |
| (1) | (2) | (3) | (4) | (5) | (6) | (7) |
| PCT20 | 04N | 0050 : 50mm | N : Direct coupling | 0 : Without motor | A1 | No symbol: Select when directly coupled |
| PCT25 | 06N | 0100 : 100mm | D : Down | | A2 | D : D-cut |
| PCT20R | | 0150 : 150mm | L : Left | | K1 | K : Key |
| PCT25R | | 0200 : 200mm | R : Right | | K2 | S : Clamp |
| | | 0250 : 250mm | | | B1 | |
| | | 0300 : 300mm | | | B2 | |
| R represents motor wrap. | These symbols represent lead and reduction ratio. For PCT, motor wrap configuration is limited to reduction ratio 1/1. Select from the table below. | | Specify "N" for direct motor coupling and select motor wrap direction from the figure on the right for motor wrap. | | Select a motor bracket from the Table of motor brackets (→ P.8) according to the motor you use. | |

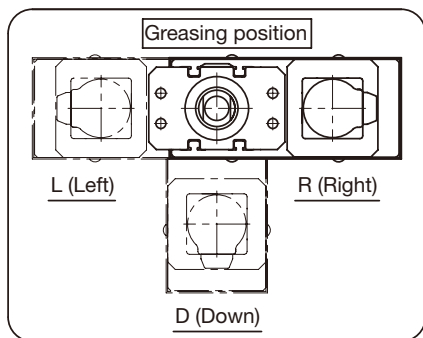
Combinations

| Model (1) | Lead, reduction ratio (2) | Stroke (3) |
|-----------------|---------------------------|--------------|
| PCT20 PCT20R | 06N | 0050 to 0200 |
| PCT25 PCT25R | 06N or 04N | 0050 to 0300 |

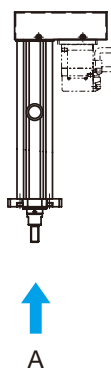
Model configuration coding

| | |
|-----------------|-------------------------|
| Direct coupling | PCT20-06N-0150-N-0-A1 |
| Motor wrap | PCT25R-06N-0300-L-0-K2K |

Option: Motor wrap



(Seen from side A)



Motor bracket and motor shaft fixing method compatibility table

| Motor model | | | | PCT20 (R) | | PCT25 (R) | |
|---------------------------------|----------|-------------|------------------|-----------------------|---------------|-----------------------|---------------|
| Manufacturer | Series | Model | Rated output [W] | Direct motor coupling | Motor wrap | Direct motor coupling | Motor wrap |
| Yaskawa Electric Corporation | Σ-V | SGMJV-A5 | 50 | A1 | A1D, A1K, A1S | - | - |
| | | SGMAV-A5 | | A1 | A1D, A1K, A1S | - | - |
| | | SGMJV-01 | 100 | - | - | A1 | A1D, A1K, A1S |
| | | SGMAV-01 | | - | - | A1 | A1D, A1K, A1S |
| | | SGMJV-02 | | - | - | A2 | A2D, A2K, A2S |
| | SGMAV-02 | 200 | - | - | A2 | A2D, A2K, A2S | |
| | Σ-7 | SGM7J-A5 | 50 | A1 | A1D, A1K, A1S | - | - |
| | | SGM7A-A5 | | A1 | A1D, A1K, A1S | - | - |
| | | SGM7J-01 | 100 | - | - | A1 | A1D, A1K, A1S |
| | | SGM7A-01 | | - | - | A1 | A1D, A1K, A1S |
| SGM7J-02 | | - | | - | A2 | A2D, A2K, A2S | |
| SGM7A-02 | 200 | - | - | A2 | A2D, A2K, A2S | | |
| Mitsubishi Electric Corporation | J4 | HG-KR053 | 50 | A1 | A1D, A1S | - | - |
| | | HG-MR053 | | A1 | A1D, A1S | - | - |
| | | HG-KR13 | 100 | - | - | A1 | A1D, A1S |
| | | HG-MR13 | | - | - | A1 | A1D, A1S |
| | | HG-KR23 | | - | - | A2 | A2K, A2S |
| | | HG-MR23 | 200 | - | - | A2 | A2K, A2S |
| OMRON Corporation | G5 | R88M-K05030 | 50 | A1 | A1K, A1S | - | - |
| | | R88M-K10030 | 100 | - | - | A1 | A1K, A1S |
| | | R88M-K20030 | 200 | - | - | K2 | K2K, K2S |
| Panasonic Corporation | A5 | MSME5A | 50 | K1 | K1D, K1K, K1S | - | - |
| | | MSME01 | 100 | - | - | K1 | K1D, K1K, K1S |
| | | MSME02 | 200 | - | - | K2 | K2D, K2K, K2S |
| Oriental Motor Co. Ltd. | α step | □ 60 | - | - | - | B1 | - |
| | 5-phase | □ 60 | - | - | - | B1 | - |
| | 2-phase | □56.4 | - | - | - | B2 | - |

Notes:

- When installing a motor other than the ones listed above, contact THK.
- Motor model number in the table shows the main part of the model number only. For more details, please refer to catalogs from each motor manufacturers.

PCT20

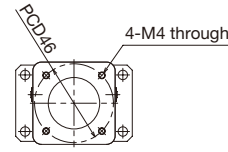
Press series
Rod diameter: 20mm



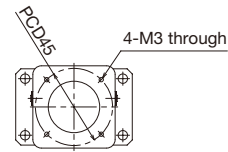
Specifications

| | | | |
|-------------------------------------|----------------------------------|----------------------------------|-------|
| Motor capacity (Rated output) [W] | | 50 | |
| Ball screw portion | Shaft diameter [mm] | 8 | |
| | Lead [mm] | 6 | |
| | Basic dynamic load rating Ca [N] | 1,950 | |
| | Basic static load rating C0a [N] | 3,510 | |
| | Root diameter [mm] | 6.872 | |
| Ball center-to-center diameter [mm] | | 8.4 | |
| Bearing portion (For fixed side) | Axial direction | Basic dynamic load rating Ca [N] | 8,000 |
| | | Static permissible load P0a [N] | 3,240 |
| Positioning repeatability [mm] | | ±0.010 | |
| Lost motion [mm] | | 0.1 | |
| Rod non-rotational accuracy [°] | | ±1 | |
| Starting torque [N-cm] | | 1.6 | |
| Maximum input torque [N-m] | | 0.48 | |

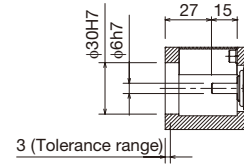
Motor bracket



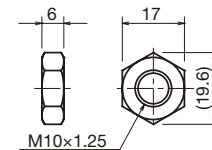
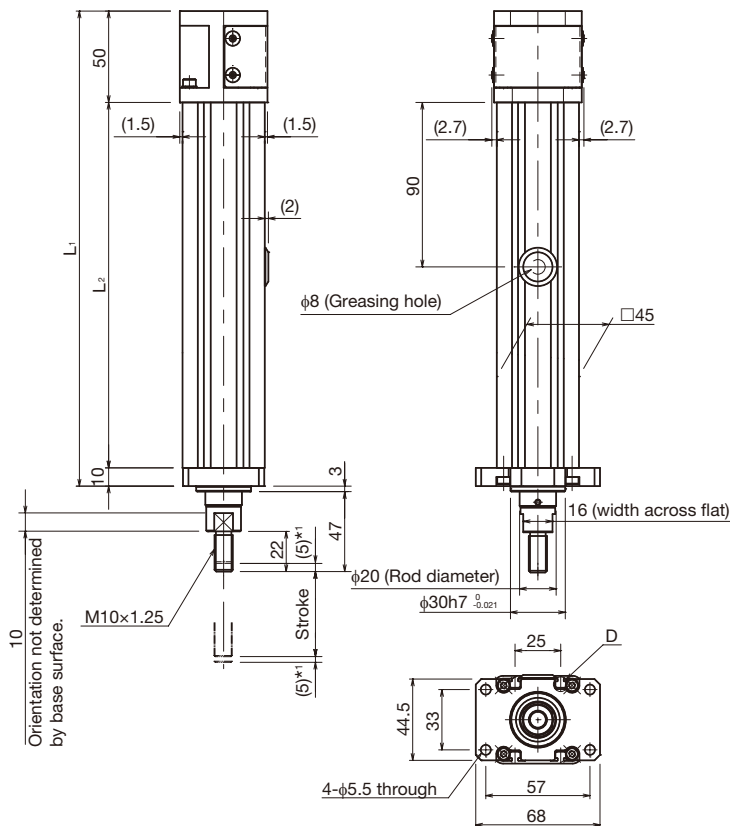
Symbol: A1



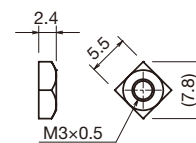
Symbol: K1



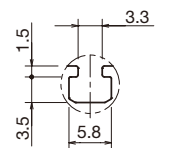
Dimensions



Hexagonal Nut (x1)



Square Nut (x8)



Section D (detail)

*1 Stroke up to mechanical stopper.

| Stroke [mm] (Stroke between mechanical stoppers) | | 50 (60) | 100 (110) | 150 (160) | 200 (210) |
|---|----------------------|---------|-----------|-----------|-----------|
| Maximum speed *2 [mm/s] | Ball screw lead: 6mm | | 300 | | 230 |
| Dimensions [mm] | L ₁ | 260 | 310 | 360 | 410 |
| | L ₂ | 200 | 250 | 300 | 350 |
| Weight [kg] | | 1.4 | 1.6 | 1.8 | 2.1 |

*2 Dependent on permissible rotational speed of the ball screw.

PCT20R

Press series
Rod diameter: 20mm

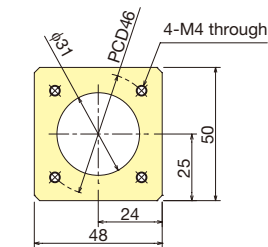
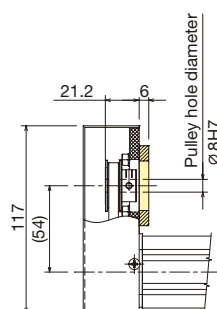


Specifications

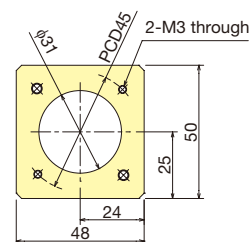
| | | | |
|-------------------------------------|----------------------------------|----------------------------------|-------|
| Motor capacity (Rated output) [W] | | 50 | |
| Ball screw portion | Shaft diameter [mm] | 8 | |
| | Lead [mm] | 6 | |
| | Basic dynamic load rating Ca [N] | 1,950 | |
| | Basic static load rating C0a [N] | 3,510 | |
| | Root diameter [mm] | 6.872 | |
| Ball center-to-center diameter [mm] | | 8.4 | |
| Bearing portion (For fixed side) | Axial direction | Basic dynamic load rating Ca [N] | 8,000 |
| | | Static permissible load P0a [N] | 3,240 |
| Positioning repeatability [mm] | | ±0.010 | |
| Lost motion [mm] | | 0.1 | |
| Rod non-rotational accuracy [°] | | ±1 | |
| Starting torque *1 [N·cm] | | 1.6 | |
| Maximum input torque [N·m] | | 0.48 | |

*1 Pulley and timing belt are not included.

Motor bracket

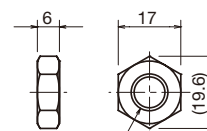
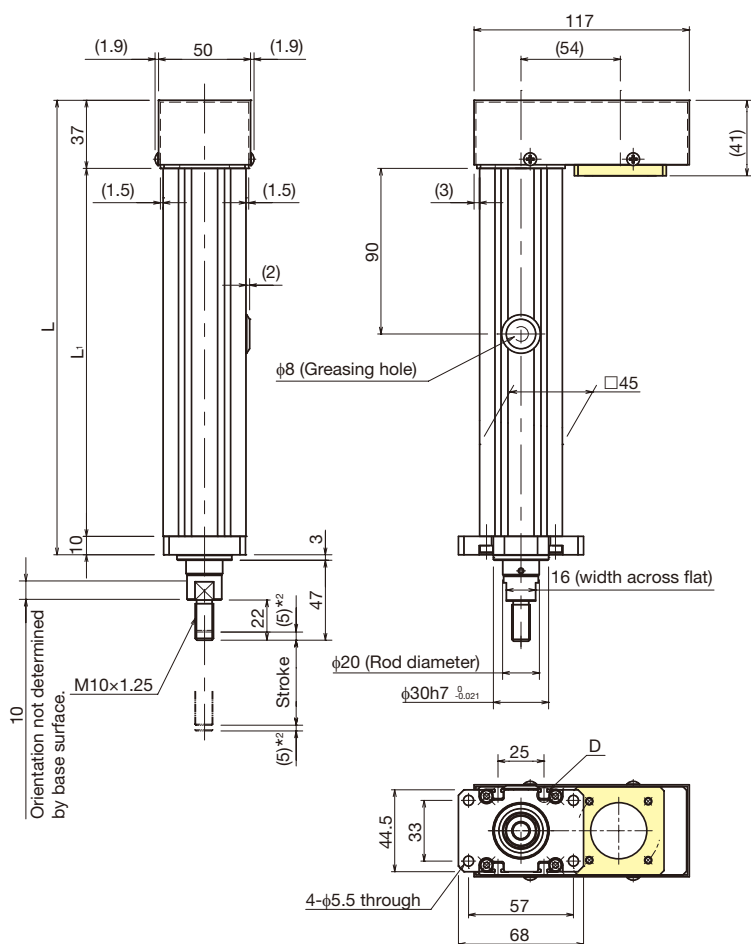


Symbol: A1D, A1K, A1S

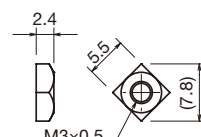


Symbol: K1D, K1K, K1S

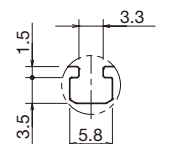
Dimensions



Hexagonal Nut (x1)



Square Nut (x8)



Section D (detail)

*2 Stroke up to mechanical stopper.

| Stroke [mm] | 50 (60) | 100 (110) | 150 (160) | 200 (210) | |
|--------------------------------------|----------------|-----------|-----------|-----------|-----|
| (Stroke between mechanical stoppers) | | | | | |
| Maximum speed *3 [mm/s] | 300 | | 230 | | |
| Dimensions [mm] | L | 247 | 297 | 347 | 397 |
| | L ₁ | 200 | 250 | 300 | 350 |
| Weight [kg] | 1.6 | 1.8 | 2.0 | 2.2 | |

*3 Dependent on permissible rotational speed of the ball screw.

PCT25

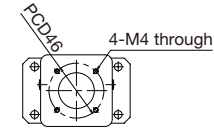
Press series
Rod diameter: 25mm



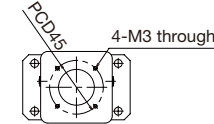
Specifications

| | | | |
|-------------------------------------|-------------------------------------|----------------------------------|--------|
| Motor capacity (Rated output) [W] | | 100 | |
| Ball screw portion | Shaft diameter [mm] | 12 | 14 |
| | Lead [mm] | 6 | 4 |
| | Basic dynamic load rating Ca [N] | 4,910 | 5,500 |
| | Basic static load rating C0a [N] | 9,600 | 11,500 |
| | Root diameter [mm] | 9.872 | 11.5 |
| | Ball center-to-center diameter [mm] | 12.65 | 14.4 |
| Bearing portion (For fixed side) | Axial direction | Basic dynamic load rating Ca [N] | 13,800 |
| | | Static permissible load P0a [N] | 5,850 |
| Positioning repeatability [mm] | | ±0.010 | |
| Lost motion [mm] | | 0.1 | |
| Rod non-rotational accuracy [°] | | ±1 | |
| Starting torque [N-cm] | | 3.2 | 2.8 |
| Maximum input torque [N-m] | | 1.91 | |

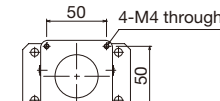
Motor bracket



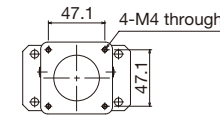
Symbol: A1



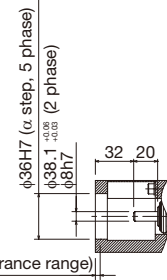
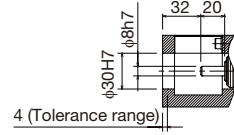
Symbol: K1



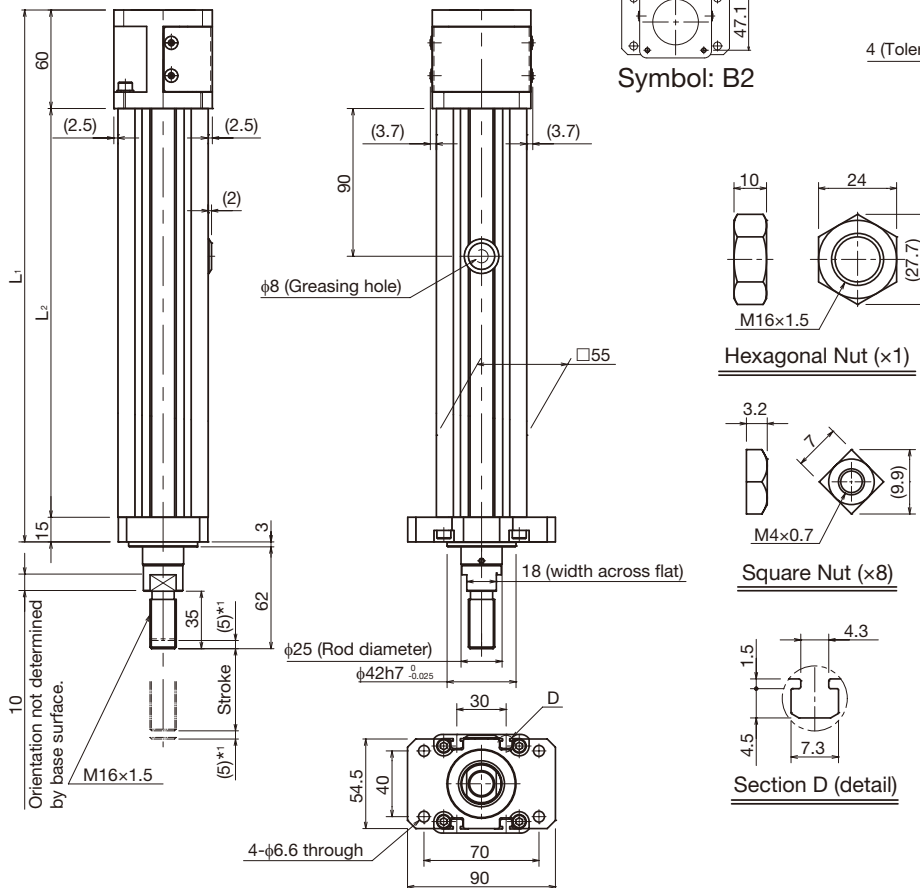
Symbol: B1



Symbol: B2



Dimensions



*1 Stroke up to mechanical stopper.

| Stroke [mm] (Stroke between mechanical stoppers) | | 50 (60) | 100 (110) | 150 (160) | 200 (210) | 250 (260) | 300 (310) |
|---|----------------------|---------|-----------|-----------|-----------|-----------|-----------|
| Maximum speed *2 [mm/s] | Ball screw lead: 6mm | | 300 | | 260 | 200 | 160 |
| | Ball screw lead: 4mm | | 200 | | | 160 | 130 |
| Dimensions [mm] | L ₁ | 324 | 374 | 424 | 474 | 524 | 574 |
| | L ₂ | 249 | 299 | 349 | 399 | 449 | 499 |
| Weight [kg] | | 2.8 | 3.2 | 3.5 | 3.8 | 4.2 | 4.5 |

*2 Dependent on permissible rotational speed of the ball screw.

PCT25R

Press series
Rod diameter: 25mm

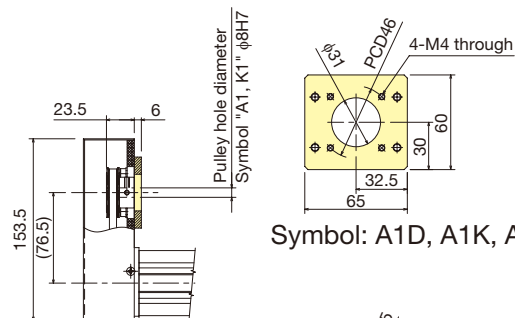


Specifications

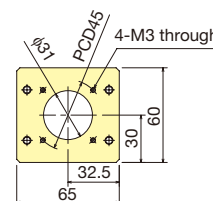
| | | | |
|-------------------------------------|-------------------------------------|----------------------------------|--------|
| Motor capacity (Rated output) [W] | | 100 | |
| Ball screw portion | Shaft diameter [mm] | 12 | 14 |
| | Lead [mm] | 6 | 4 |
| | Basic dynamic load rating Ca [N] | 4,910 | 5,500 |
| | Basic static load rating C0a [N] | 9,600 | 11,500 |
| | Root diameter [mm] | 9.872 | 11.5 |
| | Ball center-to-center diameter [mm] | 12.65 | 14.4 |
| Bearing portion (For fixed side) | Axial direction | Basic dynamic load rating Ca [N] | 13,800 |
| | | Static permissible load P0a [N] | 5,850 |
| Positioning repeatability [mm] | | ±0.010 | |
| Lost motion [mm] | | 0.1 | |
| Rod non-rotational accuracy [°] | | ±1 | |
| Starting torque *1 [N·cm] | | 3.2 | 2.8 |
| Maximum input torque [N·m] | | 0.95 | |

*1 Pulley and timing belt are not included.

Motor bracket

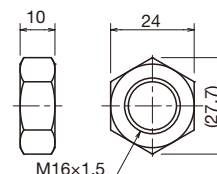
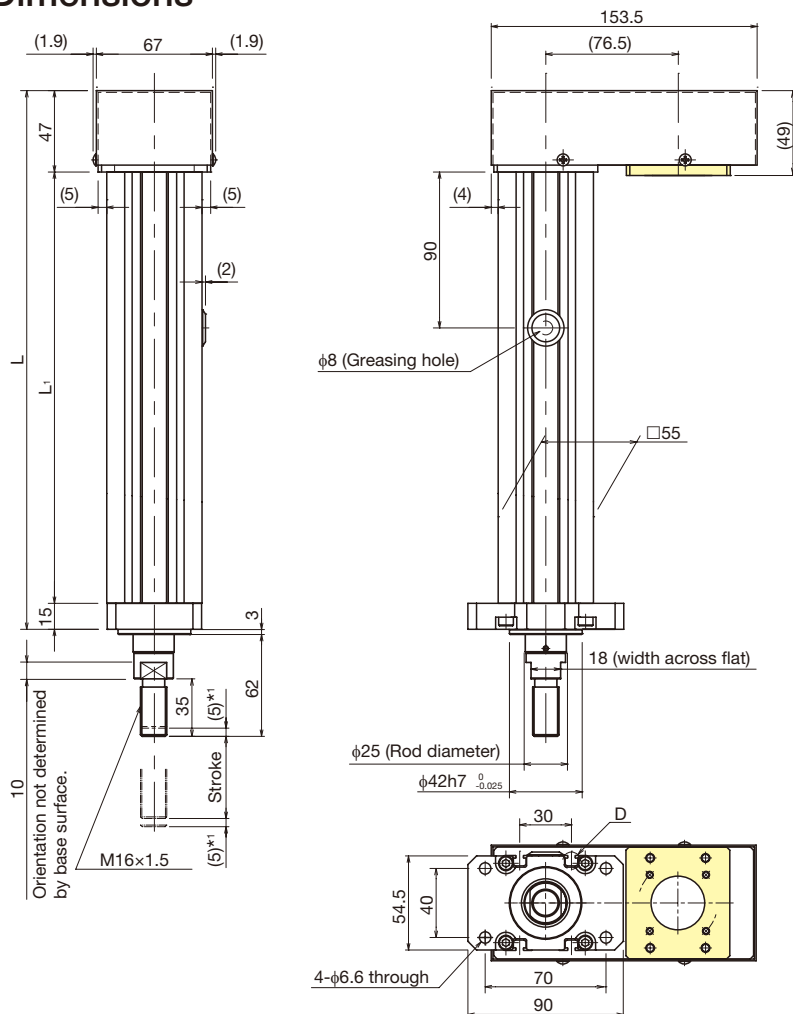


Symbol: A1D, A1K, A1S

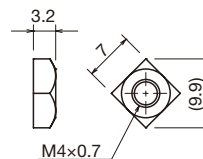


Symbol: K1D, K1K, K1S

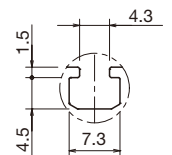
Dimensions



Hexagonal Nut (x1)



Square Nut (x8)



Section D (detail)

*1 Stroke up to mechanical stopper.

| | | | | | | | |
|--------------------------------------|----------------------|---------|-----------|-----------|-----------|-----------|-----------|
| Stroke [mm] | | 50 (60) | 100 (110) | 150 (160) | 200 (210) | 250 (260) | 300 (310) |
| (Stroke between mechanical stoppers) | | | | | | | |
| Maximum speed *2 [mm/s] | Ball screw lead: 6mm | 300 | | | 260 | 200 | 160 |
| | Ball screw lead: 4mm | 200 | | | | 160 | 130 |
| Dimensions [mm] | L | 311 | 361 | 411 | 461 | 511 | 561 |
| | L ₁ | 249 | 299 | 349 | 399 | 449 | 499 |
| Weight [kg] | | 3.1 | 3.4 | 3.8 | 4.1 | 4.4 | 4.7 |

*2 Dependent on permissible rotational speed of the ball screw.

PCT25

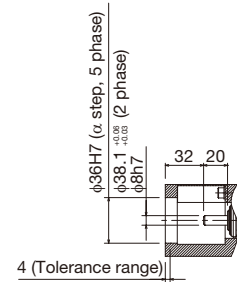
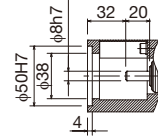
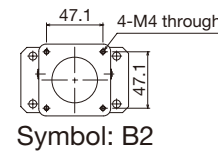
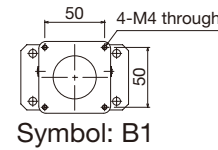
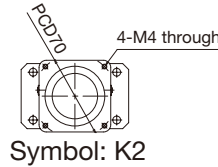
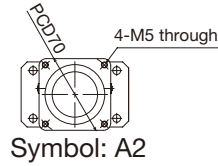
Press series
Rod diameter: 25mm



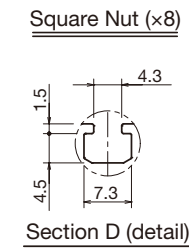
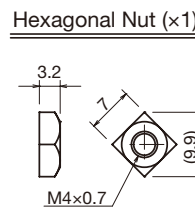
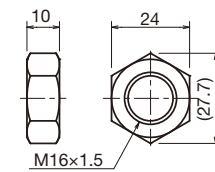
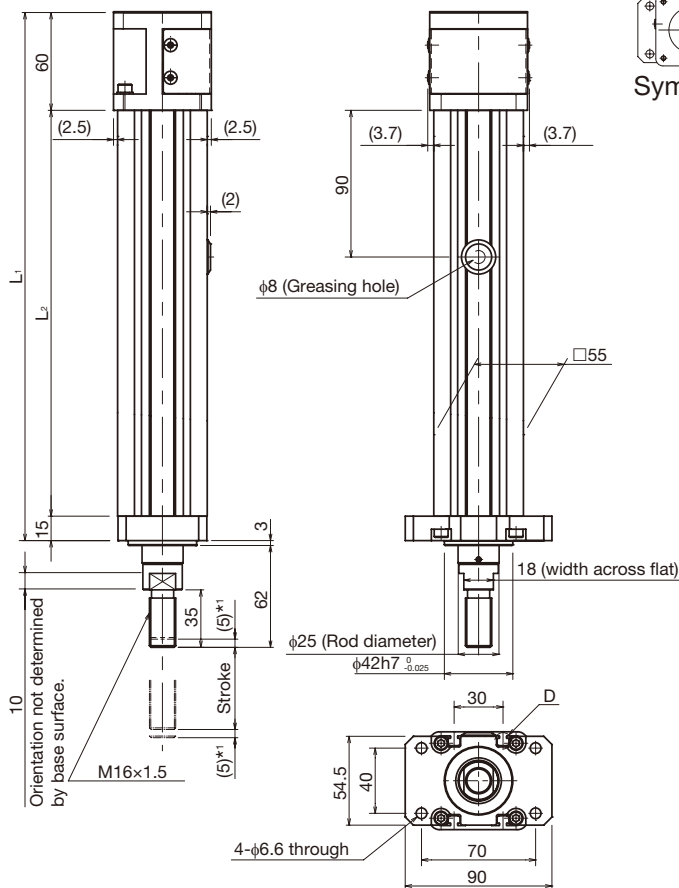
Specifications

| | | | |
|-------------------------------------|-------------------------------------|----------------------------------|--------|
| Motor capacity (Rated output) [W] | | 200 | |
| Ball screw portion | Shaft diameter [mm] | 12 | 14 |
| | Lead [mm] | 6 | 4 |
| | Basic dynamic load rating Ca [N] | 4,910 | 5,500 |
| | Basic static load rating C0a [N] | 9,600 | 11,500 |
| | Root diameter [mm] | 9.872 | 11.5 |
| | Ball center-to-center diameter [mm] | 12.65 | 14.4 |
| Bearing portion (For fixed side) | Axial direction | Basic dynamic load rating Ca [N] | 13,800 |
| | | Static permissible load P0a [N] | 5,850 |
| Positioning repeatability [mm] | | ±0.010 | |
| Lost motion [mm] | | 0.1 | |
| Rod non-rotational accuracy [°] | | ±1 | |
| Starting torque [N-cm] | | 3.2 | 2.8 |
| Maximum input torque [N-m] | | 1.91 | |

Motor bracket



Dimensions



*1 Stroke up to mechanical stopper.

| Stroke [mm] (Stroke between mechanical stoppers) | | 50 (60) | 100 (110) | 150 (160) | 200 (210) | 250 (260) | 300 (310) |
|---|----------------------|---------|-----------|-----------|-----------|-----------|-----------|
| Maximum speed *2 [mm/s] | Ball screw lead: 6mm | | 300 | | 260 | 200 | 160 |
| | Ball screw lead: 4mm | | 200 | | | 160 | 130 |
| Dimensions [mm] | L ₁ | 324 | 374 | 424 | 474 | 524 | 574 |
| | L ₂ | 249 | 299 | 349 | 399 | 449 | 499 |
| Weight [kg] | | 2.8 | 3.1 | 3.5 | 3.8 | 4.1 | 4.5 |

*2 Dependent on permissible rotational speed of the ball screw.

PCT25R

Press series
Rod diameter: 25mm

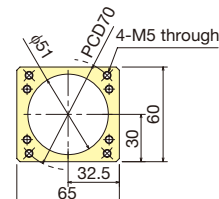
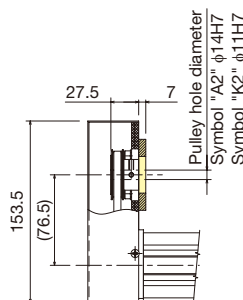


Specifications

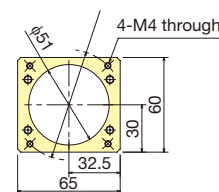
| | | | |
|-------------------------------------|-------------------------------------|----------------------------------|--------|
| Motor capacity (Rated output) [W] | | 200 | |
| Ball screw portion | Shaft diameter [mm] | 12 | 14 |
| | Lead [mm] | 6 | 4 |
| | Basic dynamic load rating Ca [N] | 4,910 | 5,500 |
| | Basic static load rating C0a [N] | 9,600 | 11,500 |
| | Root diameter [mm] | 9.872 | 11.5 |
| | Ball center-to-center diameter [mm] | 12.65 | 14.4 |
| Bearing portion (For fixed side) | Axial direction | Basic dynamic load rating Ca [N] | 13,800 |
| | | Static permissible load P0a [N] | 5,850 |
| Positioning repeatability [mm] | | ±0.010 | |
| Lost motion [mm] | | 0.1 | |
| Rod non-rotational accuracy [°] | | ±1 | |
| Starting torque *1 [N·cm] | | 3.2 | 2.8 |
| Maximum input torque [N·m] | | 1.91 | |

*1 Pulley and timing belt are not included.

Motor bracket

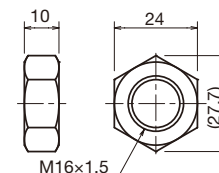
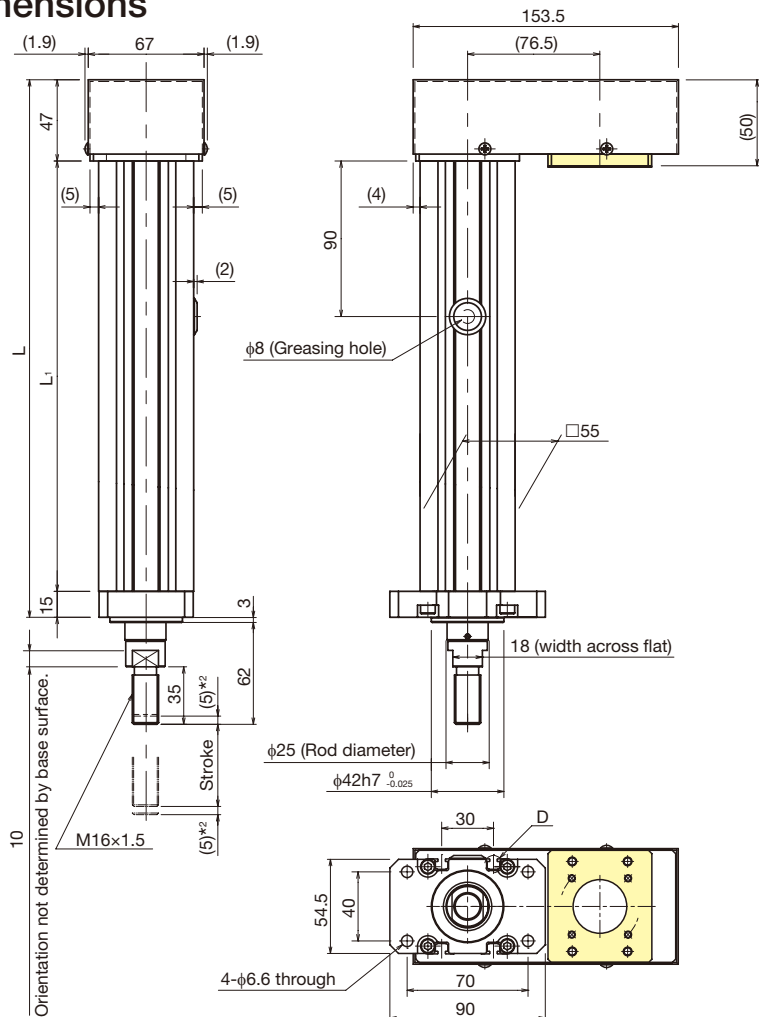


Symbol: A2D, A2K, A2S

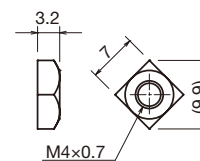


Symbol: K2D, K2K, K2S

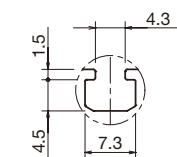
Dimensions



Hexagonal Nut (x1)



Square Nut (x8)



Section D (detail)

*2 Stroke up to mechanical stopper.

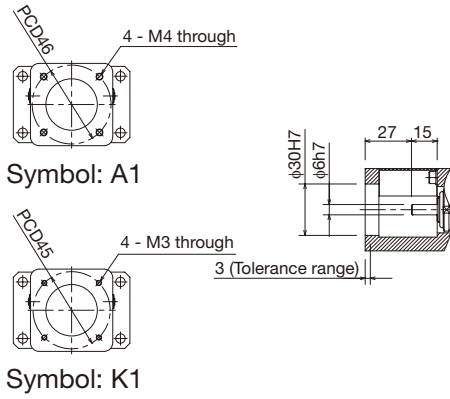
| Stroke [mm] (Stroke between mechanical stoppers) | | 50 (60) | 100 (110) | 150 (160) | 200 (210) | 250 (260) | 300 (310) |
|---|----------------------|---------|-----------|-----------|-----------|-----------|-----------|
| Maximum speed *3 [mm/s] | Ball screw lead: 6mm | 300 | | | 260 | 200 | 160 |
| | Ball screw lead: 4mm | 200 | | | | | |
| Dimensions [mm] | L | 311 | 361 | 411 | 461 | 511 | 561 |
| | L ₁ | 249 | 299 | 349 | 399 | 449 | 499 |
| Weight [kg] | | 3.1 | 3.4 | 3.8 | 4.1 | 4.4 | 4.7 |

*3 Dependent on permissible rotational speed of the ball screw.

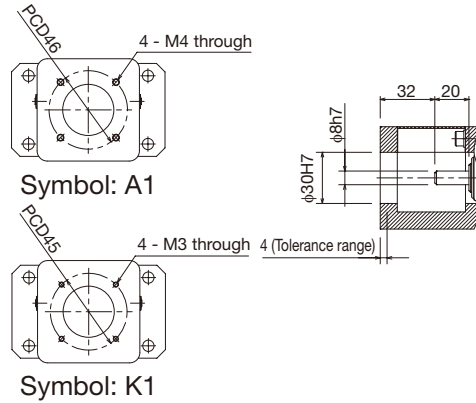
Motor Bracket List

Direct coupling type

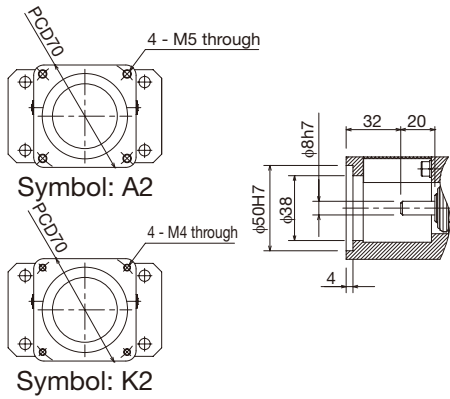
PCT20



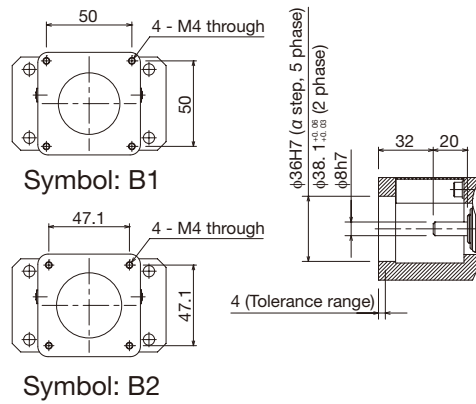
PCT25 (100W)



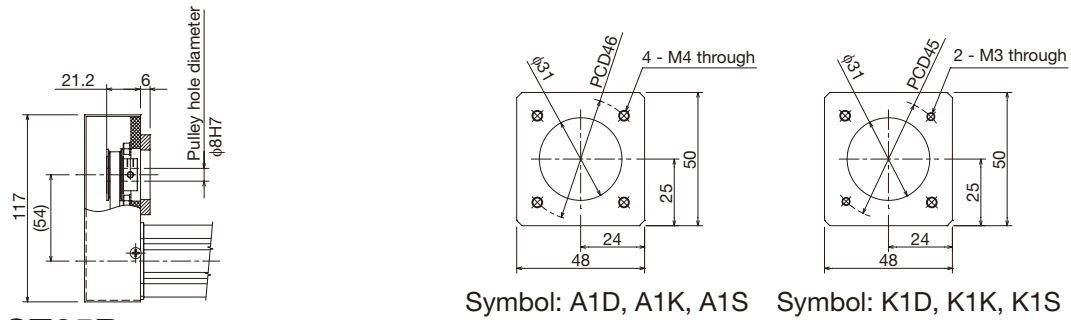
PCT25 (200W)



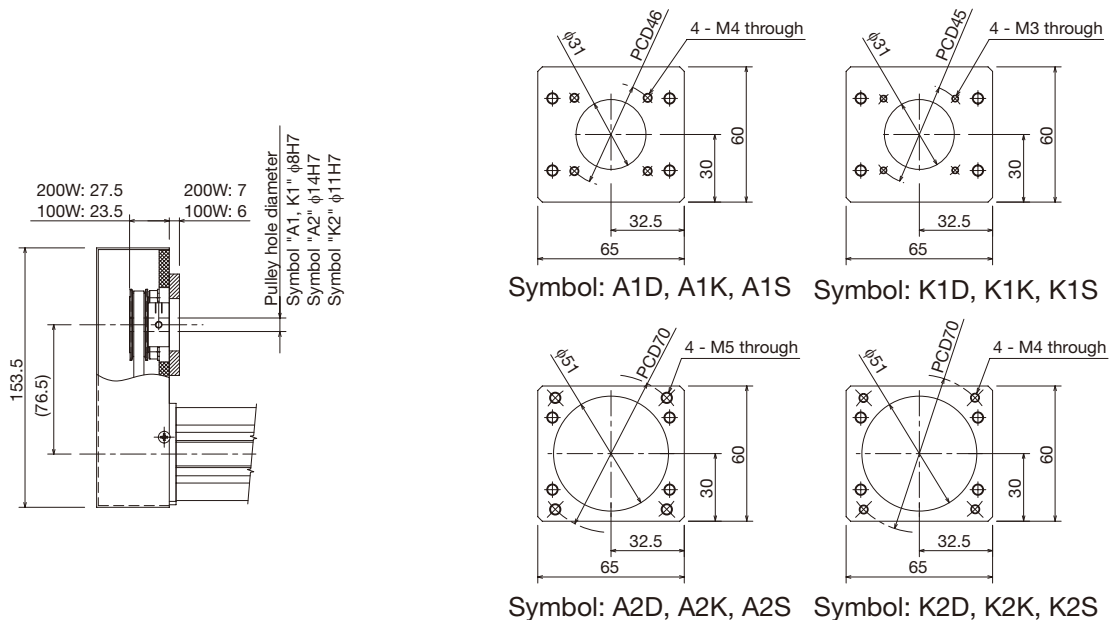
PCT25 (Stepper)



PCT20R



PCT25R



Motor wrap type

PCT technical materials

Specifications

| | | PCT20 | PCT25 | | | |
|-------------------------------------|-------------------------------------|----------------------------------|-------------|--------|-------|--------|
| Motor capacity (Rated output) [W] | | 50 | 100 | | 200 | |
| Ball screw portion | Shaft diameter [mm] | 8 | 12 | 14 | 12 | 14 |
| | Lead [mm] | 6 | 6 | 4 | 6 | 4 |
| | Basic dynamic load rating Ca [N] | 1,950 | 4,910 | 6,600 | 4,910 | 6,600 |
| | Basic static load rating C0a [N] | 3,510 | 9,600 | 12,300 | 9,600 | 12,300 |
| | Root diameter [mm] | 6.872 | 9.872 | 11.5 | 9.872 | 11.5 |
| | Ball center-to-center diameter [mm] | 8.4 | 12.65 | 14.4 | 12.65 | 14.4 |
| Bearing portion (For fixed side) | Axial direction | Basic dynamic load rating Ca [N] | 8,000 | 13,800 | | |
| | | Static permissible load P0a [N] | 3,240 | 5,850 | | |
| Starting torque *1 [N·cm] | | 1.6 | 3.2 | 2.8 | 3.2 | 2.8 |
| Maximum input torque *2 [N·m] | | 0.48 | 1.91 (0.95) | | 1.91 | |

*1 Pulley and timing belt are not included.

*2 Parentheses show values limited when adopting a motor wrap type.

Motor Wrap Portion (Timing Belt)

| Model | PCT20R (50W) | PCT25R (100W) | PCT25R (200W) |
|--|---------------------------|------------------|------------------|
| Timing belt model | 196-2GT-6 | 273-3GT-6 | 273-3GT-9 |
| Manufacturer | Gates Unitta Asia Company | | |
| Mounting tension [N] | 15.8 to 19.8 | 29 to 36 | 44 to 55 |
| Belt unit mass [g/mm (width) x m (length)] | 1.6 | 2.5 | 2.5 |
| Belt width [mm] | 6 | 6 | 9 |
| Belt span [mm] | 54 | 76.5 | 76.5 |

Recommended Coupling

| Model | PCT20 (50W) | PCT25 (100W) | PCT25 (200W) |
|----------------|-----------------------|-----------------|-----------------|
| Coupling model | SFC-010DA2 | SFC-020DA2 | SFC-025DA2 |
| Manufacturer | Miki Pulley Co., LTD. | | |

PC Model Configuration

| Model | Lead, reduction ratio | Stroke | Design symbol | Greasing position | Applicable motor (control device) | Motor cable orientation |
|-------|-----------------------|--------------|---------------|-------------------|---|-------------------------|
| PC30 | 06A | 0050 | A | D | M040BM | U |
| (1) | (2) | (3) | (4) | (5) | (6) | (7) |
| PC30 | 06A | 0050 : 50mm | A | D : Down | 0M : Without motor | U : Up |
| PC40 | 06B | 0100 : 100mm | | L : Left | 0Y : Without motor | L : Left |
| PC40H | 08C | 0150 : 150mm | | R : Right | 0S : Without motor | R : Right |
| PC50 | 06D | 0200 : 200mm | | | M040M : With motor | |
| PC60 | 10E | 0250 : 250mm | | | to | |
| PC60H | 10F | | | | M750BS : With motor and driver (with brake) | |
| PC80L | 12G | | | | | |
| PC80 | | | | | | |
| PC80H | | | | | | |

These symbols represent lead and reduction ratio. Select from the applicable motor (control device) list by model (→ P.18).

These symbols represent applicable motors. "M", "Y" or "S" at the end of the symbol represents the motor manufacturer. M: Mitsubishi Electric Corporation Y: Yaskawa Electric Corporation S: Sanyo Denki Co., Ltd.

When motor and driver are required Select from the applicable motor (control device) list symbols by model (→P.18). A driver and cables (5m each) are shipped with the PC main unit.

When motor is not required Select a symbol from "0M", "0Y", and "0S". Parts for mounting the applicable motor (motor mounting plate, mechanical lock, pulley) are included by model.

Note) If you want a network-supported servo amp/servo pack, contact THK.

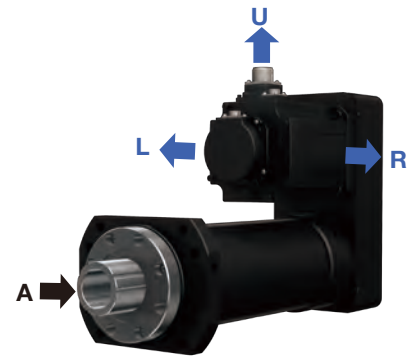
Greasing position orientation

| Greasing position | Down | Left | Right |
|--|------|------|-------|
| Symbol | D | L | R |
| Greasing position schematic diagram (Seen from rod side) | | | |

Motor cable orientation

* With motor and driver

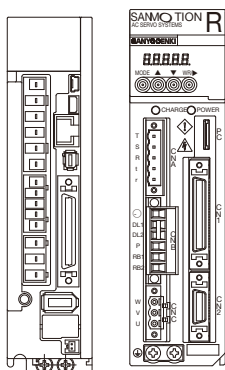
| Motor cable orientation | Upper | Left | Right |
|--|-------|------|-------|
| Symbol | U | L | R |
| Motor cable orientation schematic diagram (Seen from side A) | | | |



Motor cable orientation

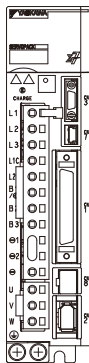
Accessory Shipped with the Main Unit

* With motor and driver

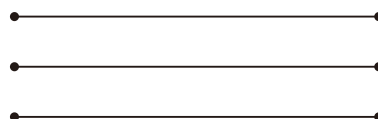


Servo amp

or



Servo pack



Various (5m) cables including motor power cable, encoder cable, brake cable, motor power/brake cable



PC main unit

Applicable motor (control device) list by model

| Model, lead, reduction ratio | Symbol *1 | Servo motor | Servo amp/servo pack | Encoder cable (5m) | Motor cable (5m) | Brake cable (5m) | External regeneration resistor |
|------------------------------|-----------|-------------------|----------------------|--------------------|---------------------|---------------------|--------------------------------|
| PC30-06A | M040M | HG-KR43 | MR-J4-40A | MR-J3ENCL5M-A1-L | MR-PWS1CBL5M-A1-L | - | - |
| | M040BM | HG-KR43B | | | | MR-BKS1CBL5M-A1-L | - |
| | M040Y | SGM7J-04AFA21 | SGD7S-2R8A00A | JZSP-C7PI0D-05-E | JZSP-C7M20F-05-E | - | - |
| | M040BY | SGM7J-04AFA2C | | | | JZSP-C7M23F-05-E *2 | - |
| | M040S | R2AA06040FXHC0 | RS1L03AC | RS-CA3-05-R | RS-CM3-05-R | - | - |
| | M040BS | R2AA06040FCHC0 | | | | RS-CB3-05-R | - |
| PC40-06B | M075M | HG-KR73 | MR-J4-70A | MR-J3ENCL5M-A1-L | MR-PWS1CBL5M-A1-L | - | - |
| | M075BM | HG-KR73B | | | | MR-BKS1CBL5M-A1-L | - |
| | M075Y | SGM7J-08AFA21 | SGD7S-5R5A00A | JZSP-C7PI0D-05-E | JZSP-C7M30F-05-E | - | - |
| | M075BY | SGM7J-08AFA2C | | | | JZSP-C7M33F-05-E *2 | - |
| | M075S | R2AA08075FXHC0 | RS1L03AC | RS-CA3-05-R | RS-CM3-05-R | - | - |
| | M075BS | R2AA08075FCHC0 | | | | RS-CB3-05-R | - |
| PC40H-08C | M100M | HG-SR102 | MR-J4-100A | MR-J3ENCL5M-L | SVPM-J3HF3-A-5 *3 | - | - |
| | M100BM | HG-SR102B | | | | SVPM-J3HF2B-A-5 *3 | - |
| | M085Y | SGM7G-09AFA21 | SGD7S-7R6A00A | JZSP-CVP01-05-E | JZSP-UVA101-05-E *4 | - | - |
| | M085BY | SGM7G-09AFA2C | | | | JZSP-UVA131-05-E *5 | - |
| | M120S | R2AA13120BXHC0 | RS1L03AC | AL-00918637-05 | AL-00918631-05 | - | - |
| | M120BS | R2AA13120BCHC0 | | | | AL-00918632-05 | - |
| PC50-06D | M150M | HG-SR152 | MR-J4-200A | MR-J3ENCL5M-L | SVPM-J3HF3-A-5 *3 | - | - |
| | M150BM | HG-SR152B | | | | SVPM-J3HF2B-A-5 *3 | - |
| | M130Y | SGM7G-13AFA21 | SGD7S-120A00A | JZSP-CVP01-05-E | JZSP-UVA101-05-E *4 | - | - |
| | M130BY | SGM7G-13AFA2C | | | | JZSP-UVA131-05-E *5 | - |
| | M180S | R2AA13180HXHC0 | RS1A05AC | AL-00918637-05 | AL-00918633-05 | - | - |
| | M180BS | R2AA13180HCHC0 | | | | AL-00918634-05 | - |
| PC60-10E | M200M | HG-SR202 | MR-J4-200A | MR-J3ENCL5M-L | SVPM-J3HF5-A-5 *3 | - | - |
| | M200BM | HG-SR202B | | | | SVPM-J3HF2B-A-5 *3 | - |
| | M180Y | SGM7G-20AFA21 | SGD7S-180A00A | JZSP-CVP01-05-E | JZSP-UVA301-05-E *4 | - | - |
| | M180BY | SGM7G-20AFA2C | | | | JZSP-UVA331-05-E *5 | - |
| | M200S | R2AA13200LXHC0 | RS1A05AC | AL-00918637-05 | AL-00918633-05 | - | - |
| | M200BS | R2AA13200LCHC0 | | | | AL-00918634-05 | - |
| PC60H-10F | M350M | HG-SR352 | MR-J4-350A | MR-J3ENCL5M-L | SVPM-J3HF6-A-5 *3 | - | - |
| | M350BM | HG-SR352B | | | | SVPM-J3HF2B-A-5 *3 | - |
| | M290Y | SGM7G-30AFA21 | SGD7S-330A00A | JZSP-CVP01-05-E | JZSP-UVA701-05-E *4 | - | - |
| | M290BY | SGM7G-30AFA2C | | | | JZSP-UVA731-05-E *5 | - |
| | M350S | R2AA18350LXHC0 *6 | RS1A10AC | AL-00918637-05 | AL-00918635-05 | - | - |
| | M350BS | R2AA18350LCHC0 *6 | | | | AL-00918636-05 | - |
| PC80L-12G | M500M | HG-SR502 | MR-J4-500A | MR-J3ENCL5M-L | SVPM-J3HF6-A-5 *3 | - | - |
| | M500BM | HG-SR502B | | | | SVPM-J3HF2B-A-5 *3 | - |
| | M440Y | SGM7G-44AFA21 | SGD7S-330A00A | JZSP-CVP01-05-E | JZSP-UVA701-05-E *4 | - | - |
| | M440BY | SGM7G-44AFA2C | | | | JZSP-UVA731-05-E *5 | - |
| | M450S | R2AA18450HXHC0 | RS1A15AC | AL-00918637-05 | AL-00918635-05 | - | - |
| | M450BS | R2AA18450HCHC0 | | | | AL-00918636-05 *2 | - |
| PC80-12G | M700M | HG-SR702 | MR-J4-700A | MR-J3ENCL5M-L | SVPM-J3HF8-A-5 *3 | - | - |
| | M700BM | HG-SR702B | | | | SVPM-J3HF2B-A-5 *3 | - |
| | M550Y | SGM7G-55AFA21 | SGD7S-470A00A | JZSP-CVP01-05-E | JZSP-UVA01-05-E *4 | - | JUSP-RA04-E *7 |
| | M550BY | SGM7G-55AFA2C | | | | JZSP-UVA031-05-E *5 | |
| | M550S | R2AA18550HXHC0 | RS1A30AC | AL-00918637-05 | AL-00918629-05 | - | REGIST-1000W6R7B *7 |
| | M550BS | R2AA18550HCHC0 | | | | AL-00918630-05 | |
| PC80H-12G | M420M | HG-SR421 | MR-J4-500A | MR-J3ENCL5M-L | SVPM-J3HF8-A-5 *3 | - | - |
| | M420BM | HG-SR421B | | | | SVPM-J3HF2B-A-5 *3 | - |
| | M750Y | SGM7G-75AFA21 | SGD7S-550A00A | JZSP-CVP01-05-E | JZSP-UVA01-05-E *4 | - | JUSP-RA05-E *7 |
| | M750BY | SGM7G-75AFA2C | | | | JZSP-UVA031-05-E *5 | |
| | M750S | R2AA18750HXHC0 | RS1A30AC | AL-00918637-05 | AL-00918629-05 | - | REGIST-1000W6R7B *7 |
| | M750BS | R2AA18750HCHC0 | | | | AL-00918630-05 | |

*1 "M", "Y" or "S" at the end of the symbol represents the motor manufacturer. M: Mitsubishi Electric Corporation, Y: Yaskawa Electric Corporation, S: Sanyo Denki Co., Ltd.

*2 Motor cable and brake cable are integrated together

*3 Manufactured by Misumi Corporation

*4 Manufactured by Yaskawa Controls Co., LTD.

*5 Each model for a set of a motor cable and brake cable: Manufactured by Yaskawa Controls Co., LTD.

*6 PC specification special product (output shaft length differs from the manufacturer's catalog.)

*7 Servo amps and servo packs require an external regeneration resistor as they do not have a built-in regeneration resistor.

PC30-06A

Press series

Rod outer diameter: 30mm, Rated thrust: 1.6kN

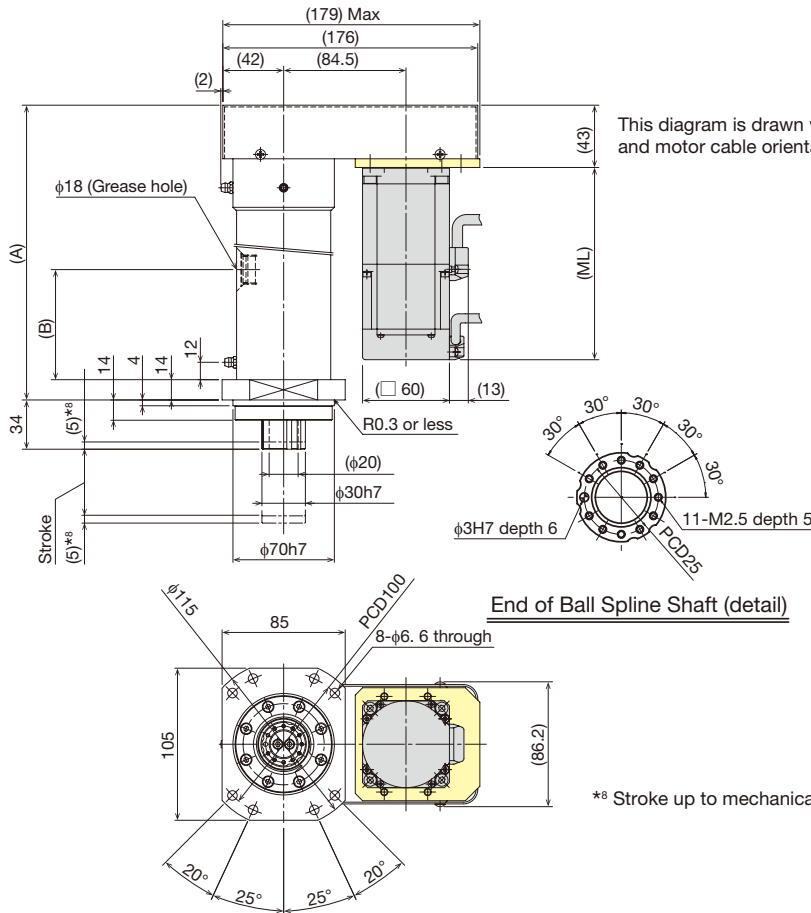


Specifications

| | | | | | |
|---|--------------------|----------|---------------------------------|------------------------------|-----------------------|
| Servo motor | Motor symbol | TH | M040 (B)M | M040 (B)Y | M040 (B)S |
| | Manufacturer | - | Mitsubishi Electric Corporation | Yaskawa Electric Corporation | Sanyo Denki Co., Ltd. |
| | Model | THC: M40 | HG-KR43 | SGM7J-04 | R2AA06040F |
| | Rated output [kW] | 0.4 | 0.4 | 0.4 | 0.4 |
| Ball screw lead [mm] | 6 | | | | |
| Reduction ratio | 28/40 | | | | |
| Rated thrust *1 [kN] | 1.6 | | | | |
| Instantaneous maximum thrust *2 [kN] | 3.3 | | | | |
| Maximum speed *3 [mm/s] | 210 | | | | |
| Acceleration and deceleration rate *4 [G] | 0.3 | | | | |
| Permissible axial load *5 [kN] | Pressing direction | 3.3 | | | |
| | Tensile direction | 1.6 | | | |
| Positioning repeatability [mm] | ±0.005 | | | | |
| Backlash [mm] | 0.020 | | | | |
| Permissible input torque *6 [N-m] | 2.6 | | | | |
| Maximum load capacity *7 [kg] | 15 | | | | |

- *1 At rated motor torque.
- *2 Dependent on permissible axial load.
- *3 At rated motor revolution.
- *4 When maximum load capacity is applied.
- *5 Load that can be applied to the actuator when static.
- *6 To prevent mechanical damage, motor must be operated within this limit.
- *7 When actuator is positioned vertically with rod reaching lower end.

Dimensions



*8 Stroke up to mechanical stopper.

| Stroke (mm) (Stroke between mechanical stoppers) | | 50 (60) | 100 (110) | 150 (160) | 200 (210) | 250 (260) | |
|---|-----------------------|-----------------------|--------------|-------------|-------------|-------------|--|
| Dimensions [mm] | A | 203.5 | 253.5 | 303.5 | 353.5 | 403.5 | |
| | B | 67 | 80 | 130 | 180 | 230 | |
| | ML | THC: M40 (M40B) *9 | 98.1 (132.7) | | | | |
| | | M040M (M040BM) *9 *10 | 98.3 (135.1) | | | | |
| | | M040Y (M040BY) *9 *10 | 85.5 (126) | | | | |
| M040S (M040BS) *9 *10 | | 95.5 (123.5) | | | | | |
| Weight [kg] | THC: M40 (M40B) *9 | 8.1 (8.6) | 9.2 (9.7) | 10.3 (10.8) | 11.4 (11.9) | 12.6 (13.1) | |
| | M040M (M040BM) *9 *10 | 8.2 (8.6) | 9.3 (9.7) | 10.4 (10.8) | 11.5 (11.9) | 12.7 (13.1) | |
| | M040Y (M040BY) *9 *10 | 7.9 (8.5) | 9.0 (9.6) | 10.1 (10.7) | 11.2 (11.8) | 12.4 (13.0) | |
| | M040S (M040BS) *9 *10 | 8.1 (8.5) | 9.2 (9.6) | 10.3 (10.7) | 11.4 (11.8) | 12.6 (13.0) | |

*9 Values when a brake is installed are shown in parentheses.

*10 "M", "Y" or "S" at the end of the model number represents the motor manufacturer.

M: Mitsubishi Electric Corporation, Y: Yaskawa Electric Corporation, S: Sanyo Denki Co., Ltd.

PC40-06B

Press series

Rod outer diameter: 40mm, Rated thrust: 3.2kN



Specifications

| Servo motor | Motor symbol | TH | M075 (B)M | M075 (B)Y | M075 (B)S |
|---|-------------------|--------------------|---------------------------------|------------------------------|-----------------------|
| | Manufacturer | - | Mitsubishi Electric Corporation | Yaskawa Electric Corporation | Sanyo Denki Co., Ltd. |
| | Model | THC: M75 | HG-KR73 | SGM7J-08 | R2AA08075F |
| | Rated output [kW] | 0.75 | 0.75 | 0.75 | 0.75 |
| Ball screw lead [mm] | | 6 | | | |
| Reduction ratio | | 32/48 | | | |
| Rated thrust *1 [kN] | | 3.2 | | | |
| Instantaneous maximum thrust *2 [kN] | | 6.4 | | | |
| Maximum speed *3 [mm/s] | | 200 | | | |
| Acceleration and deceleration rate *4 [G] | | 0.3 | | | |
| Permissible axial load *5 [kN] | | Pressing direction | 6.4 | | |
| | | Tensile direction | 3.2 | | |
| Positioning repeatability [mm] | | ±0.005 | | | |
| Backlash [mm] | | 0.020 | | | |
| Permissible input torque *6 [N·m] | | 4.8 | | | |
| Maximum load capacity *7 [kg] | | 25 | | | |

*1 At rated motor torque.

*2 Dependent on permissible axial load.

*3 At rated motor revolution.

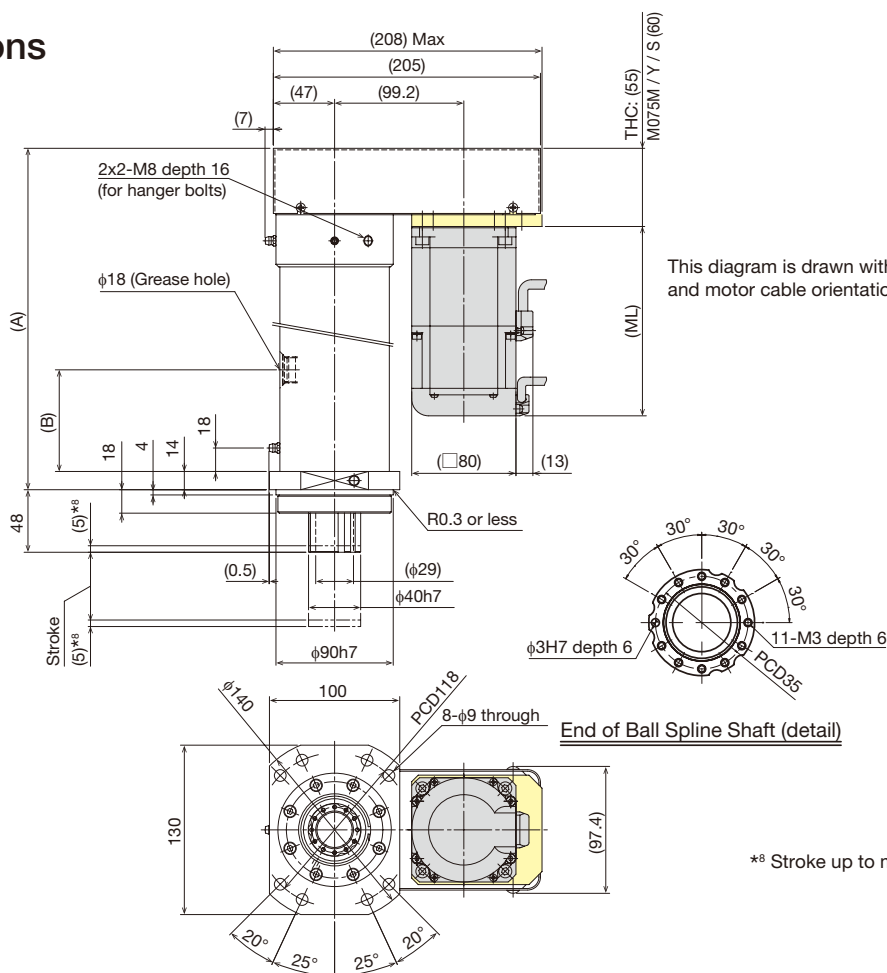
*4 When maximum load capacity is applied.

*5 Load that can be applied to the actuator when static.

*6 To prevent mechanical damage, motor must be operated within this limit.

*7 When actuator is positioned vertically with rod reaching lower end.

Dimensions



This diagram is drawn with greasing position down (D) and motor cable orientation up (U).

End of Ball Spline Shaft (detail)

*8 Stroke up to mechanical stopper.

| Stroke [mm] (Stroke between mechanical stoppers) | | 50 (60) | 100 (110) | 150 (160) | 200 (210) | 250 (260) | |
|---|-----------------------|-----------------------|---------------|-------------|-------------|-------------|--|
| Dimensions [mm] | A | 237 | 287 | 337 | 387 | 437 | |
| | B | 83 | 93 | 143 | 193 | 243 | |
| | ML | THC: M75 (M75B) *9 | 108.7 (145.3) | | | | |
| | | M075M (M075BM) *9 *10 | 112 (152.3) | | | | |
| | | M075Y (M075BY) *9 *10 | 97 (144) | | | | |
| M075S (M075BS) *9 *10 | | 107.3 (143) | | | | | |
| Weight [kg] | THC: M75 (M75B) *9 | 13.5 (14.4) | 15.1 (16.0) | 16.6 (17.5) | 18.1 (19.0) | 19.6 (20.5) | |
| | M075M (M075BM) *9 *10 | 13.8 (14.8) | 15.4 (16.4) | 16.9 (17.9) | 18.4 (19.4) | 19.9 (20.9) | |
| | M075Y (M075BY) *9 *10 | 13.2 (13.8) | 14.8 (15.4) | 16.3 (16.9) | 17.8 (18.4) | 19.3 (19.9) | |
| | M075S (M075BS) *9 *10 | 13.6 (14.5) | 15.2 (16.1) | 16.7 (17.6) | 18.2 (19.1) | 19.7 (20.6) | |

*9 Values when a brake is installed are shown in parentheses.

*10 "M", "Y" or "S" at the end of the model number represents the motor manufacturer.

M: Mitsubishi Electric Corporation, Y: Yaskawa Electric Corporation, S: Sanyo Denki Co., Ltd.

PC40H-08C

Press series

Rod outer diameter: 40mm, Rated thrust: 5.6 - 6.7kN



Specifications

| | | | | |
|---|--------------------|---------------------------------|------------------------------|-----------------------|
| Servo motor | Motor symbol | M100 (B)M | M085 (B)Y | M120 (B)S |
| | Manufacturer | Mitsubishi Electric Corporation | Yaskawa Electric Corporation | Sanyo Denki Co., Ltd. |
| | Model | HG-SR102 | SGM7G-09 | R2AA13120B |
| | Rated output [kW] | 1 | 0.85 | 1.2 |
| Ball screw lead [mm] | 8 | | | |
| Reduction ratio | 25/44 | | | |
| Rated thrust *1 [kN] | 5.6 | 6.3 | 6.7 | |
| Instantaneous maximum thrust *2 [kN] | 11.2 | | | |
| Maximum speed *3 [mm/s] | 151 | 113 | 151 | |
| Acceleration and deceleration rate *4 [G] | 0.1 | | | |
| Permissible axial load *5 [kN] | Pressing direction | 11.2 | | |
| | Tensile direction | 5.6 | | |
| Positioning repeatability [mm] | ±0.005 | | | |
| Backlash [mm] | 0.020 | | | |
| Permissible input torque *6 [N·m] | 9.5 | | | |
| Maximum load capacity *7 [kg] | 50 | | | |

*1 At rated motor torque.

*2 Dependent on permissible axial load.

*3 At rated motor revolution.

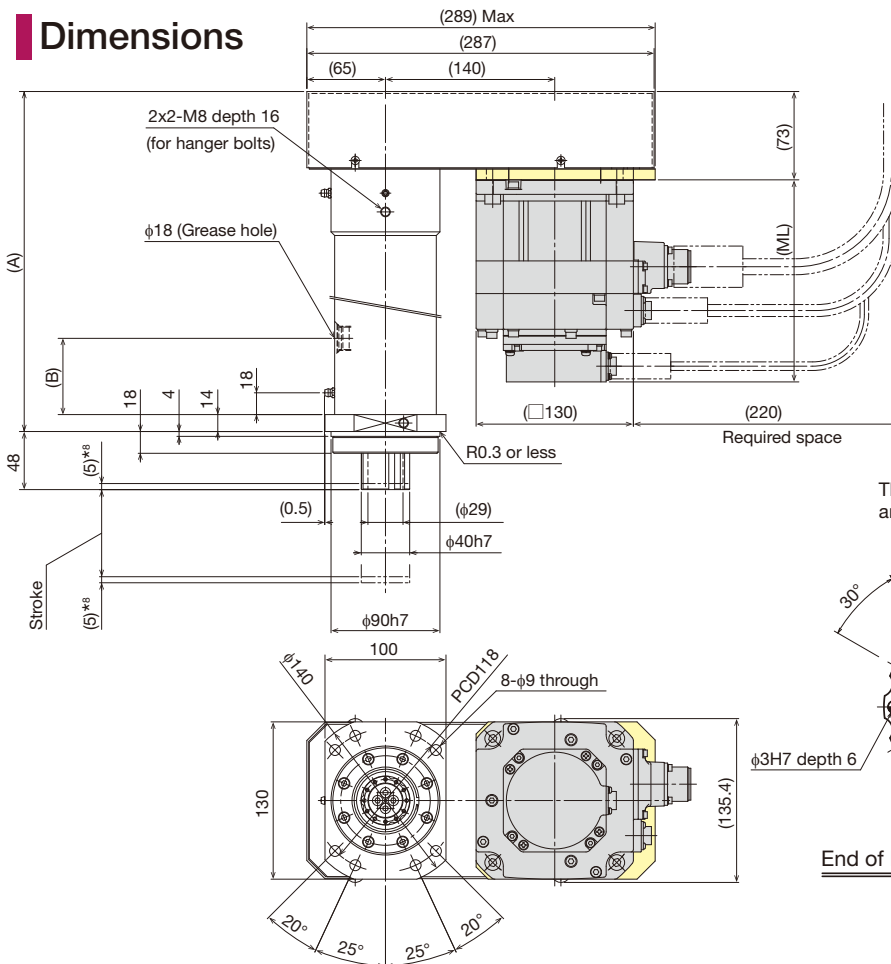
*4 When maximum load capacity is applied.

*5 Load that can be applied to the actuator when static.

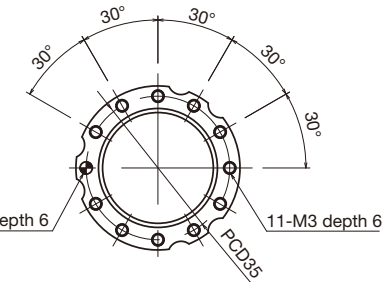
*6 To prevent mechanical damage, motor must be operated within this limit.

*7 When actuator is positioned vertically with rod reaching lower end.

Dimensions



This diagram is drawn with greasing position down (D) and motor cable orientation up (U).



End of Ball Spline Shaft (detail)

*8 Stroke up to mechanical stopper.

| Stroke [mm] (Stroke between mechanical stoppers) | | 50 (60) | 100 (110) | 150 (160) | 200 (210) | 250 (260) | |
|---|-----------------------|-----------------------|-------------|-------------|-------------|-------------|--|
| Dimensions [mm] | A | 271 | 321 | 371 | 421 | 471 | |
| | B | 83 | 93 | 113 | 163 | 213 | |
| | ML | M100M (M100BM) *9 *10 | 132.5 (167) | | | | |
| | | M085Y (M085BY) *9 *10 | 137 (173) | | | | |
| M120S (M120BS) *9 *10 | | 120.5 (160) | | | | | |
| Weight [kg] | M100M (M100BM) *9 *10 | 21.8 (23.8) | 23.4 (25.4) | 25.0 (27.0) | 26.6 (28.6) | 28.2 (30.2) | |
| | M085Y (M085BY) *9 *10 | 21.1 (23.1) | 22.7 (24.7) | 24.3 (26.3) | 25.9 (27.9) | 27.5 (29.5) | |
| | M120S (M120BS) *9 *10 | 21.7 (23.6) | 23.3 (25.2) | 24.9 (26.8) | 26.5 (28.4) | 28.1 (30.0) | |

*9 Values when brake is installed are shown in parentheses.

*10 "M", "Y" or "S" at the end of the model number represents the motor manufacturer.

M: Mitsubishi Electric Corporation, Y: Yaskawa Electric Corporation, S: Sanyo Denki Co., Ltd.

PC50-06D

Press series

Rod outer diameter: 50mm, Rated thrust: 8.4 - 10.2kN

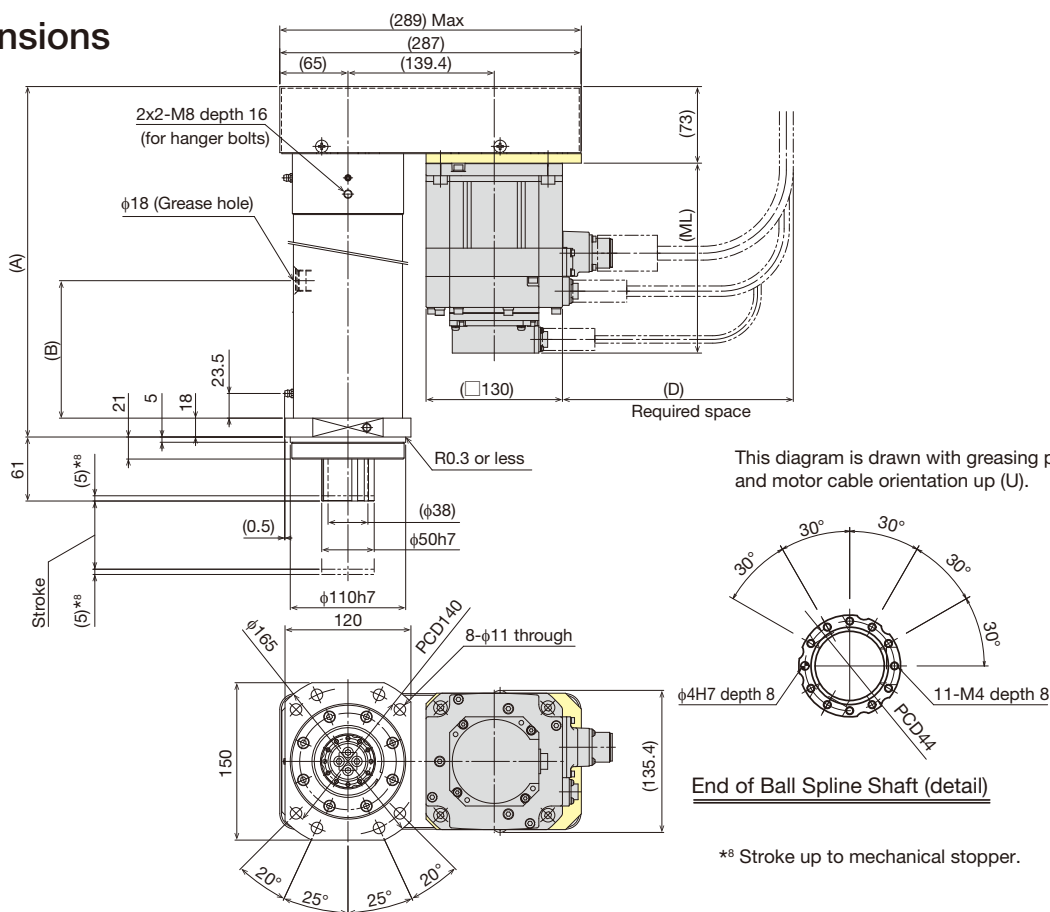


Specifications

| Servo motor | Motor symbol | M150 (B)M | M130 (B)Y | M180 (B)S |
|---|--------------------|---------------------------------|------------------------------|-----------------------|
| | Manufacturer | Mitsubishi Electric Corporation | Yaskawa Electric Corporation | Sanyo Denki Co., Ltd. |
| | Model | HG-SR152 | SGM7G-13 | R2AA13180H |
| | Rated output [kW] | 1.5 | 1.3 | 1.8 |
| Ball screw lead [mm] | | 6 | | |
| Reduction ratio | | 30/40 | | |
| Rated thrust * ¹ [kN] | | 8.4 | 9.8 | 10.2 |
| Instantaneous maximum thrust * ² [kN] | | 16.8 | | |
| Maximum speed * ³ [mm/s] | | 150 | 112 | 150 |
| Acceleration and deceleration rate * ⁴ [G] | | 0.1 | | |
| Permissible axial load * ⁵ [kN] | Pressing direction | 16.8 | | |
| | Tensile direction | 8.4 | | |
| Positioning repeatability [mm] | | ±0.005 | | |
| Backlash [mm] | | 0.020 | | |
| Permissible input torque * ⁶ [N·m] | | 14.3 | | |
| Maximum load capacity * ⁷ [kg] | | 75 | | |

*¹ At rated motor torque.*² Dependent on permissible axial load.*³ At rated motor revolution.*⁴ When maximum load capacity is applied.*⁵ Load that can be applied to the actuator when static.*⁶ To prevent mechanical damage, motor must be operated within this limit.*⁷ When actuator is positioned vertically with rod reaching lower end.

Dimensions



| Stroke [mm] | | 50 (60) | 100 (110) | 150 (160) | 200 (210) | 250 (260) |
|--------------------------------------|---|---|-------------|-------------|-------------|-------------|
| (Stroke between mechanical stoppers) | | | | | | |
| Dimensions [mm] | A | 294 | 344 | 394 | 444 | 494 |
| | B | 101 | | 111 | 161 | 211 |
| | ML | M150M (M150BM) * ⁹ * ¹⁰ | 146.5 (181) | | | |
| | | M130Y (M130BY) * ⁹ * ¹⁰ | 153 (189) | | | |
| | | M180S (M180BS) * ⁹ * ¹⁰ | 138 (179) | | | |
| | D | M150M (M150BM) * ¹⁰ | 220 | | | |
| M130Y (M130BY) * ¹⁰ | | 220 | | | | |
| M180S (M180BS) * ¹⁰ | | 250 | | | | |
| Weight [kg] | M150M (M150BM) * ⁹ * ¹⁰ | 29.1 (31.1) | 31.6 (33.6) | 34.0 (36.0) | 36.5 (38.5) | 39.0 (41.0) |
| | M130Y (M130BY) * ⁹ * ¹⁰ | 28.9 (30.8) | 31.4 (33.3) | 33.8 (35.7) | 36.3 (38.2) | 38.8 (40.7) |
| | M180S (M180BS) * ⁹ * ¹⁰ | 29.8 (31.0) | 32.3 (33.5) | 34.7 (35.9) | 37.2 (38.4) | 39.7 (40.9) |

*⁹ Values when brake is installed are shown in parentheses.*¹⁰ "M", "Y" or "S" at the end of the model number represents the motor manufacturer.

M: Mitsubishi Electric Corporation, Y: Yaskawa Electric Corporation, S: Sanyo Denki Co., Ltd.

PC60-10E

Press series

Rod outer diameter: 60mm, Rated thrust: 10.9 - 13.1kN



Specifications

| Servo motor | Motor symbol | M200 (B)M | M180 (B)Y | M200 (B)S |
|---|--------------------|---------------------------------|------------------------------|-----------------------|
| | Manufacturer | Mitsubishi Electric Corporation | Yaskawa Electric Corporation | Sanyo Denki Co., Ltd. |
| | Model | HG-SR202 | SGM7G-20 | R2AA13200L |
| | Rated output [kW] | 2 | 1.8 | 2 |
| Ball screw lead [mm] | | 10 | | |
| Reduction ratio | | 28/60 | | |
| Rated thrust *1 [kN] | | 10.9 | 13.1 | 10.9 |
| Instantaneous maximum thrust *2 [kN] | | 21.8 | | |
| Maximum speed *3 [mm/s] | | 155 | 116 | 155 |
| Acceleration and deceleration rate *4 [G] | | 0.1 | | |
| Permissible axial load *5 [kN] | Pressing direction | 21.8 | | |
| | Tensile direction | 10.9 | | |
| Positioning repeatability [mm] | | ±0.005 | | |
| Backlash [mm] | | 0.020 | | |
| Permissible input torque *6 [N·m] | | 19.1 | | |
| Maximum load capacity *7 [kg] | | 100 | | |

*1 At rated motor torque.

*2 Dependent on permissible axial load.

*3 At rated motor revolution.

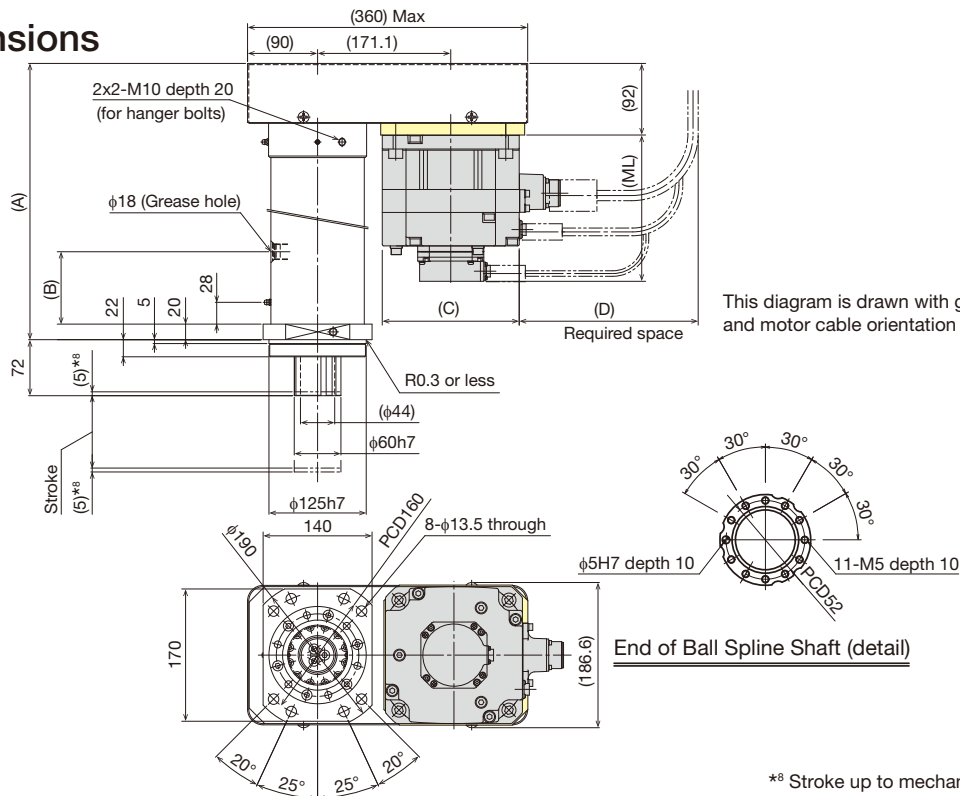
*4 When maximum load capacity is applied.

*5 Load that can be applied to the actuator when static.

*6 To prevent mechanical damage, motor must be operated within this limit.

*7 When actuator is positioned vertically with rod reaching lower end.

Dimensions



*8 Stroke up to mechanical stopper.

| Stroke [mm] (Stroke between mechanical stoppers) | | 50 (60) | 100 (110) | 150 (160) | 200 (210) | 250 (260) |
|---|-----------------------|-----------------------|-------------|-------------|-------------|-------------|
| Dimensions [mm] | A | 305 | 355 | 405 | 455 | 505 |
| | B | 113 | | | 163 | 213 |
| | ML | M200M (M200BM) *9 *10 | 138.5 (188) | | | |
| | | M180Y (M180BY) *9 *10 | 171 (207) | | | |
| | | M200S (M200BS) *9 *10 | 171 (216) | | | |
| | C | M200M (M200BM) *10 | □176 | | | |
| | | M180Y (M180BY) *10 | □130 | | | |
| | | M200S (M200BS) *10 | □130 | | | |
| | D | M200M (M200BM) *10 | 230 | | | |
| | | M180Y (M180BY) *10 | 240 | | | |
| M200S (M200BS) *10 | | 250 | | | | |
| Weight [kg] | M200M (M200BM) *9 *10 | 47.4 (53.4) | 50.9 (56.9) | 54.4 (60.4) | 58.0 (64.0) | 61.5 (67.5) |
| | M180Y (M180BY) *9 *10 | 45.0 (47.4) | 48.5 (50.9) | 52.0 (54.4) | 55.6 (58.0) | 59.1 (61.5) |
| | M200S (M200BS) *9 *10 | 46.4 (48.4) | 49.9 (51.9) | 53.4 (55.4) | 57.0 (59.0) | 60.5 (62.5) |

*9 Values when brake is installed are shown in parentheses.

*10 "M", "Y" or "S" at the end of the model number represents the motor manufacturer.

M: Mitsubishi Electric Corporation, Y: Yaskawa Electric Corporation, S: Sanyo Denki Co., Ltd.

PC60H-10F

Press series

Rod outer diameter: 60mm, Rated thrust: 17.8 - 19.8kN

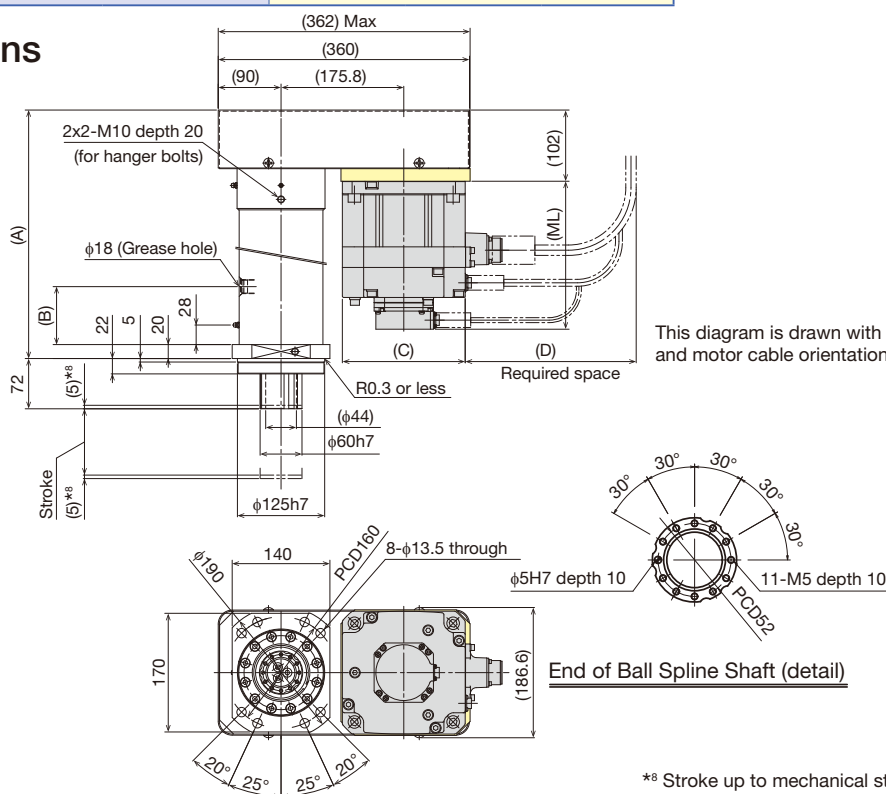


Specifications

| Servo motor | Motor symbol | M350 (B)M | M290 (B)Y | M350 (B)S |
|---|--------------------|---------------------------------|------------------------------|-----------------------|
| | Manufacturer | Mitsubishi Electric Corporation | Yaskawa Electric Corporation | Sanyo Denki Co., Ltd. |
| | Model | HG-SR352 | SGM7G-30 | R2AA18350L |
| | Rated output [kW] | 3.5 | 2.9 | 3.5 |
| Ball screw lead [mm] | | 10 | | |
| Reduction ratio | | 30/60 | | |
| Rated thrust * ¹ [kN] | | 17.8 | 19.8 | 18.1 |
| Instantaneous maximum thrust * ² [kN] | | 35.6 | | |
| Maximum speed * ³ [mm/s] | | 166 | 125 | 166 |
| Acceleration and deceleration rate * ⁴ [G] | | 0.1 | | |
| Permissible axial load * ⁵ [kN] | Pressing direction | 35.6 | | |
| | Tensile direction | 17.8 | | |
| Positioning repeatability [mm] | | ±0.005 | | |
| Backlash [mm] | | 0.020 | | |
| Permissible input torque * ⁶ [N·m] | | 33.4 | | |
| Maximum load capacity * ⁷ [kg] | | 150 | | |

*¹ At rated motor torque.*² Dependent on permissible axial load.*³ At rated motor revolution.*⁴ When maximum load capacity is applied.*⁵ Load that can be applied to the actuator when static.*⁶ To prevent mechanical damage, motor must be operated within this limit.*⁷ When actuator is positioned vertically with rod reaching lower end.

Dimensions



| Stroke [mm] (Stroke between mechanical stoppers) | | 50 (60) | 100 (110) | 150 (160) | 200 (210) | 250 (260) |
|---|---|---|-------------|-------------|-------------|-------------|
| Dimensions [mm] | A | 349 | 399 | 449 | 499 | 549 |
| | B | 123 | | 145 | | 195 |
| | ML | M350M (M350BM) * ⁹ * ¹⁰ | 162.5 (212) | | | |
| | | M290Y (M290BY) * ⁹ * ¹⁰ | 160 (208) | | | |
| | | M350S (M350BS) * ⁹ * ¹⁰ | 155 (205) | | | |
| | C | M350M (M350BM) * ¹⁰ | □176 | | | |
| | | M290Y (M290BY) * ¹⁰ | □180 | | | |
| | | M350S (M350BS) * ¹⁰ | □180 | | | |
| | D | M350M (M350BM) * ¹⁰ | 245 | | | |
| | | M290Y (M290BY) * ¹⁰ | 285 | | | |
| M350S (M350BS) * ¹⁰ | | 300 | | | | |
| Weight [kg] | M350M (M350BM) * ⁹ * ¹⁰ | 57.2 (63.2) | 60.7 (66.7) | 64.3 (70.3) | 67.8 (73.8) | 71.3 (77.3) |
| | M290Y (M290BY) * ⁹ * ¹⁰ | 54.7 (60.7) | 58.2 (64.2) | 61.8 (67.8) | 65.3 (71.3) | 68.8 (74.8) |
| | M350S (M350BS) * ⁹ * ¹⁰ | 56.7 (61.2) | 60.2 (64.7) | 63.8 (68.3) | 67.3 (71.8) | 70.8 (75.3) |

*⁹ Values when brake is installed are shown in parentheses.*¹⁰ "M", "Y" or "S" at the end of the model number represents the motor manufacturer.

M: Mitsubishi Electric Corporation, Y: Yaskawa Electric Corporation, S: Sanyo Denki Co., Ltd.

PC80L-12G

Press series

Rod outer shape: 80mm, Rated thrust: 21 - 28kN



Specifications

| Servo motor | Motor symbol | M500 (B)M | M440 (B)Y | M450 (B)S |
|---|--------------------|---------------------------------|------------------------------|-----------------------|
| | Manufacturer | Mitsubishi Electric Corporation | Yaskawa Electric Corporation | Sanyo Denki Co., Ltd. |
| | Model | HG-SR502 | SGM7G-44 | R2AA18450H |
| | Rated output [kW] | 5 | 4.4 | 4.5 |
| Ball screw lead [mm] | | 12 | | |
| Reduction ratio | | 40/90 | | |
| Rated thrust *1 [kN] | | 24 | 28 | 21 |
| Instantaneous maximum thrust *2 [kN] | | 71 | 71 | 75 |
| Maximum speed *3 [mm/s] | | 177 | 133 | 177 |
| Acceleration and deceleration rate *4 [G] | | 0.1 | | |
| Permissible axial load *5 [kN] | Pressing direction | 120 | | |
| | Tensile direction | 48 | | |
| Positioning repeatability [mm] | | ±0.005 | | |
| Backlash [mm] | | 0.020 | | |
| Permissible input torque *6 [N·m] | | 120 | | |
| Maximum load capacity *7 [kg] | | 200 | | |

*1 At rated motor torque.

*2 Dependent on permissible axial load.

*3 At rated motor revolution.

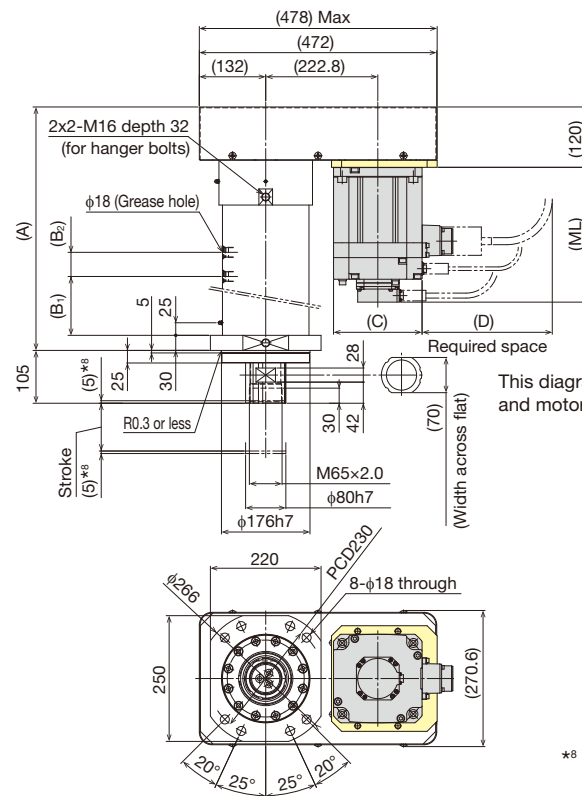
*4 When maximum load capacity is applied.

*5 Load that can be applied to the actuator when static.

*6 To prevent mechanical damage, motor must be operated within this limit.

*7 When actuator is positioned vertically with rod reaching lower end.

Dimensions



This diagram is drawn with greasing position down (D) and motor cable orientation up (U).

*8 Stroke up to mechanical stopper.

| Stroke [mm] (Stroke between mechanical stoppers) | | 50 (60) | 100 (110) | 150 (160) | 200 (210) | 250 (260) | |
|---|-----------------------|-----------------------|-------------|-----------|-----------|-----------|--|
| Dimensions [mm] | A | 484 | 534 | 584 | 634 | 684 | |
| | B ₁ | 117 | 119 | 121 | 171 | 221 | |
| | B ₂ | 48 | 96 | | 144 | | |
| | ML | M500M (M500BM) *9 *10 | 178.5 (228) | | | | |
| | | M440Y (M440BY) *9 *10 | 184 (232) | | | | |
| | | M450S (M450BS) *9 *10 | 172 (222) | | | | |
| | C | M500M (M500BM) *10 | □176 | | | | |
| | | M440Y (M440BY) *10 | □180 | | | | |
| | | M450S (M450BS) *10 | □180 | | | | |
| | D | M500M (M500BM) *10 | 245 | | | | |
| M440Y (M440BY) *10 | | 285 | | | | | |
| M450S (M450BS) *10 | | 380 | | | | | |
| Weight [kg] | M500M (M500BM) *9 *10 | 133 (139) | 140 (146) | 146 (152) | 153 (159) | 160 (166) | |
| | M440Y (M440BY) *9 *10 | 131 (137) | 137 (143) | 144 (150) | 151 (157) | 157 (163) | |
| | M450S (M450BS) *9 *10 | 133 (135) | 139 (142) | 146 (149) | 153 (155) | 159 (168) | |

*9 Values when brake is installed are shown in parentheses.

*10 "M", "Y" or "S" at the end of the model number represents the motor manufacturer.

M: Mitsubishi Electric Corporation, Y: Yaskawa Electric Corporation, S: Sanyo Denki Co., Ltd.

PC80-12G

Press series

Rod outer shape: 80mm, Rated thrust: 33 - 35kN



Specifications

| Servo motor | Motor symbol | M700 (B)M | M550 (B)Y | M550 (B)S |
|---|-------------------|---------------------------------|------------------------------|-----------------------|
| | Manufacturer | Mitsubishi Electric Corporation | Yaskawa Electric Corporation | Sanyo Denki Co., Ltd. |
| | Model | HG-SR702 | SGM7G-55A | R2AA18550H |
| | Rated output [kW] | 7 | 5.5 | 5.5 |
| Ball screw lead [mm] | | 12 | | |
| Reduction ratio | | 40/90 | | |
| Rated thrust *1 [kN] | | 33 | 35 | 35 |
| Instantaneous maximum thrust *2 [kN] | | 100 | 102 | 107 |
| Maximum speed *3 [mm/s] | | 177 | 133 | 133 |
| Acceleration and deceleration rate *4 [G] | | 0.1 | | |
| Permissible axial load *5 [kN] | | Pressing direction | 120 | |
| | | Tensile direction | 48 | |
| Positioning repeatability [mm] | | ±0.005 | | |
| Backlash [mm] | | 0.020 | | |
| Permissible input torque *6 [N·m] | | 120 | | |
| Maximum load capacity *7 [kg] | | 200 | | |

*1 At rated motor torque.

*2 Dependent on permissible axial load.

*3 At rated motor revolution.

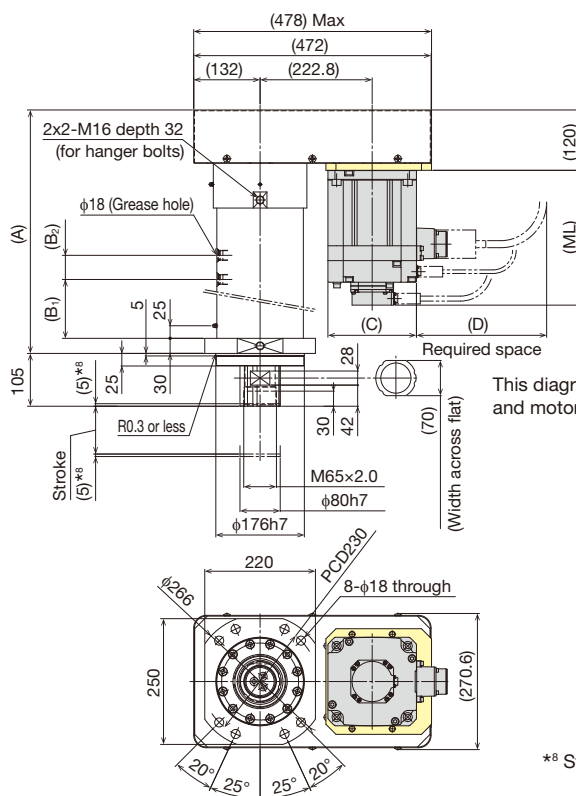
*4 When maximum load capacity is applied.

*5 Load that can be applied to the actuator when static.

*6 To prevent mechanical damage, motor must be operated within this limit.

*7 When actuator is positioned vertically with rod reaching lower end.

Dimensions



This diagram is drawn with greasing position down (D) and motor cable orientation up (U).

*8 Stroke up to mechanical stopper.

| Stroke [mm] (Stroke between mechanical stoppers) | | 50 (60) | 100 (110) | 150 (160) | 200 (210) | 250 (260) | |
|---|-----------------------|-----------------------|-------------|-----------|-----------|-----------|--|
| Dimensions [mm] | A | 484 | 534 | 584 | 634 | 684 | |
| | B ₁ | 117 | 119 | 121 | 171 | 221 | |
| | B ₂ | 48 | 96 | | 144 | | |
| | ML | M700M (M700BM) *9 *10 | 218.5 (268) | | | | |
| | | M550Y (M550BY) *9 *10 | 221 (265) | | | | |
| | | M550S (M550BS) *9 *10 | 228 (274) | | | | |
| | C | M700M (M700BM) *10 | □176 | | | | |
| | | M550Y (M550BY) *10 | □180 | | | | |
| | | M550S (M550BS) *10 | | | | | |
| | D | M700M (M700BM) *10 | 379 | | | | |
| M550Y (M550BY) *10 | | 432 | | | | | |
| M550S (M550BS) *10 | | 505 | | | | | |
| Weight [kg] | M700M (M700BM) *9 *10 | 140 (146) | 147 (153) | 153 (159) | 160 (166) | 167 (173) | |
| | M550Y (M550BY) *9 *10 | 135 (141) | 141 (147) | 148 (154) | 155 (161) | 161 (167) | |
| | M550S (M550BS) *9 *10 | 141 (144) | 147 (150) | 154 (157) | 161 (164) | 168 (170) | |

*9 Values when brake is installed are shown in parentheses.

*10 "M", "Y" or "S" at the end of the model number represents the motor manufacturer.

M: Mitsubishi Electric Corporation, Y: Yaskawa Electric Corporation, S: Sanyo Denki Co., Ltd.

PC80H-12G

Press series

Rod outer shape: 80mm, Rated thrust: 40 - 48kN



Specifications

| Servo motor | Motor symbol | M420 (B)M | M750 (B)Y | M750 (B)S |
|---|--------------------|---------------------------------|------------------------------|-----------------------|
| | Manufacturer | Mitsubishi Electric Corporation | Yaskawa Electric Corporation | Sanyo Denki Co., Ltd. |
| | Model | HG-SR421 | SGM7G-75 | R2AA18750H |
| | Rated output [kW] | 4.2 | 7.5 | 7.5 |
| Ball screw lead [mm] | | 12 | | |
| Reduction ratio | | 40/90 | | |
| Rated thrust *1 [kN] | | 40 | 48 | 48 |
| Instantaneous maximum thrust *2 [kN] | | 120 | 120 | 120 |
| Maximum speed *3 [mm/s] | | 88 | 133 | 133 |
| Acceleration and deceleration rate *4 [G] | | 0.1 | | |
| Permissible axial load *5 [kN] | Pressing direction | 120 | | |
| | Tensile direction | 48 | | |
| Positioning repeatability [mm] | | ±0.005 | | |
| Backlash [mm] | | 0.020 | | |
| Permissible input torque *6 [N·m] | | 120 | | |
| Maximum load capacity *7 [kg] | | 200 | | |

*1 At rated motor torque.

*2 Dependent on permissible axial load.

*3 At rated motor revolution.

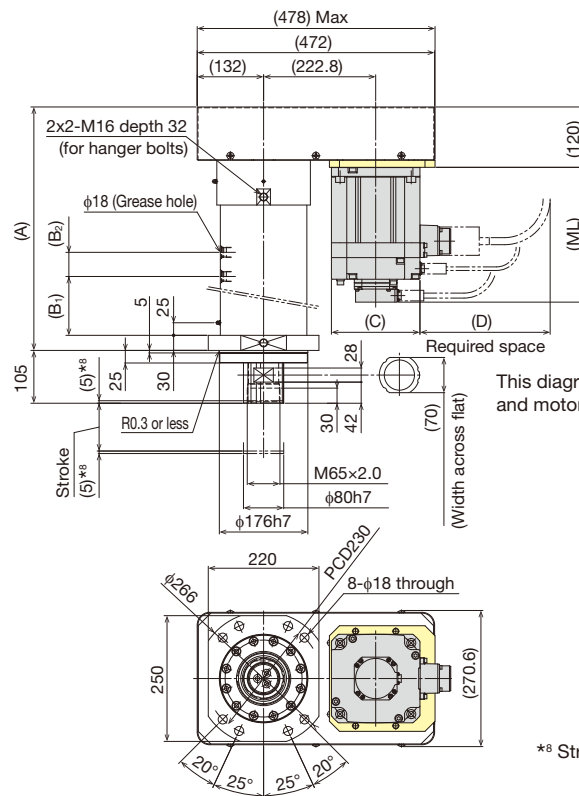
*4 When maximum load capacity is applied.

*5 Load that can be applied to the actuator when static.

*6 To prevent mechanical damage, motor must be operated within this limit.

*7 When actuator is positioned vertically with rod reaching lower end.

Dimensions



This diagram is drawn with greasing position down (D) and motor cable orientation up (U).

*8 Stroke up to mechanical stopper.

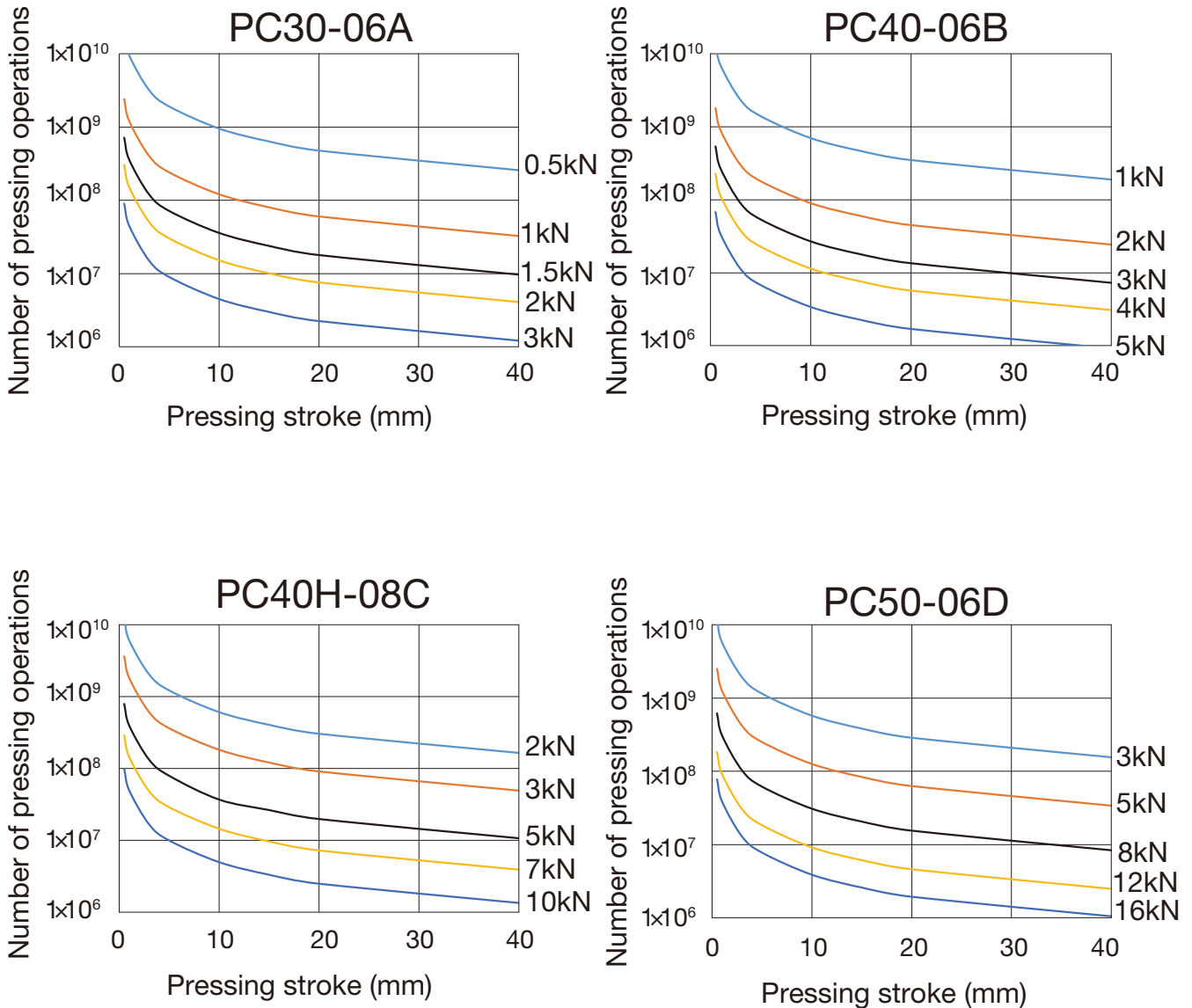
| Stroke [mm] (Stroke between mechanical stoppers) | | 50 (60) | 100 (110) | 150 (160) | 200 (210) | 250 (260) | |
|---|-----------------------|-----------------------|-------------|-----------|-----------|-----------|--|
| Dimensions [mm] | A | 484 | 534 | 584 | 634 | 684 | |
| | B ₁ | 117 | 119 | 121 | 171 | 221 | |
| | B ₂ | 48 | 96 | | 144 | | |
| | ML | M420M (M420BM) *9 *10 | 218.5 (268) | | | | |
| | | M750Y (M750BY) *9 *10 | 267 (311) | | | | |
| | | M750S (M750BS) *9 *10 | 273 (329) | | | | |
| | C | M420M (M420BM) *10 | □176 | | | | |
| | | M750Y (M750BY) *10 | | | | | |
| | | M750S (M750BS) *10 | □180 | | | | |
| | D | M420M (M420BM) *10 | 379 | | | | |
| M750Y (M750BY) *10 | | 432 | | | | | |
| M750S (M750BS) *10 | | 505 | | | | | |
| Weight [kg] | M420M (M420BM) *9 *10 | 140 (146) | 147 (153) | 153 (159) | 160 (166) | 167 (173) | |
| | M750Y (M750BY) *9 *10 | 143 (148) | 149 (155) | 156 (161) | 163 (168) | 169 (175) | |
| | M750S (M750BS) *9 *10 | 149 (153) | 155 (160) | 162 (167) | 169 (173) | 176 (180) | |

*9 Values when brake is installed are shown in parentheses.

*10 "M", "Y" or "S" at the end of the model number represents the motor manufacturer.

M: Mitsubishi Electric Corporation, Y: Yaskawa Electric Corporation, S: Sanyo Denki Co., Ltd.

PC Theoretical pressing force service life (number of presses)



Service life will fluctuate depending on pressing load and pressing stroke.

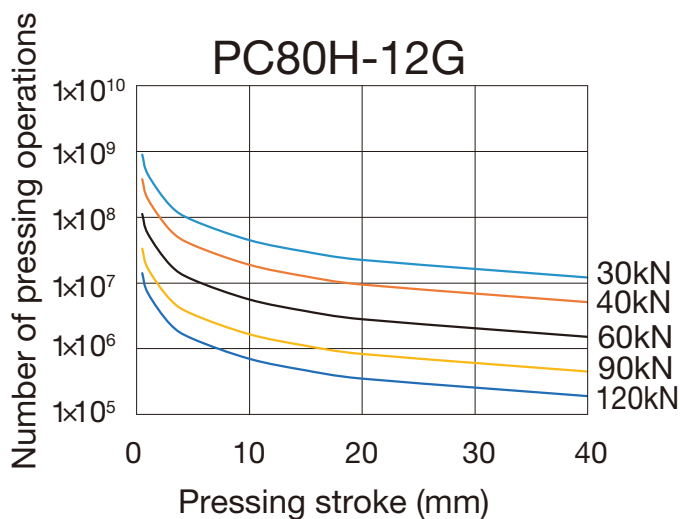
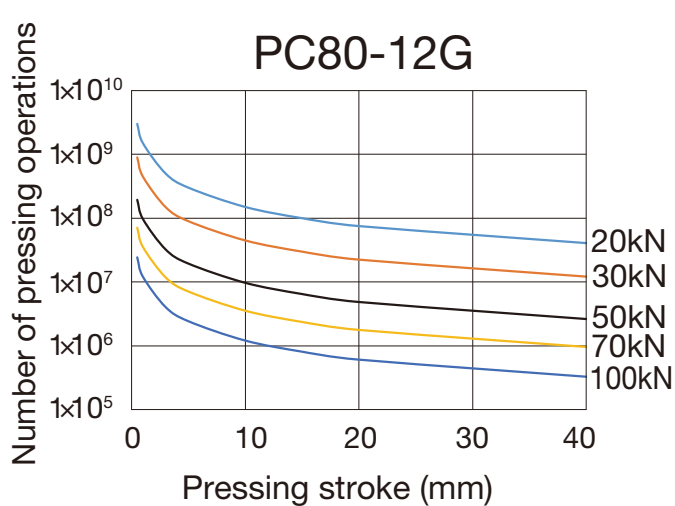
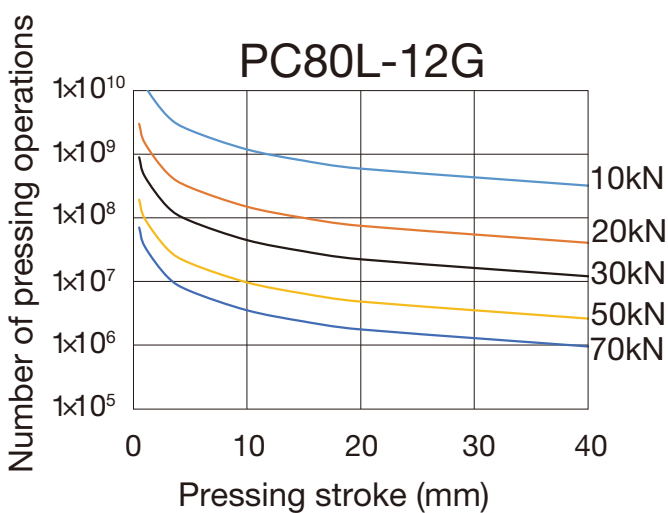
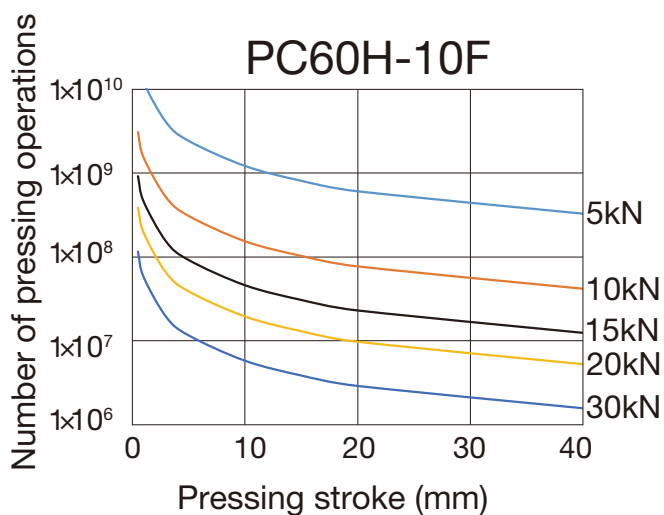
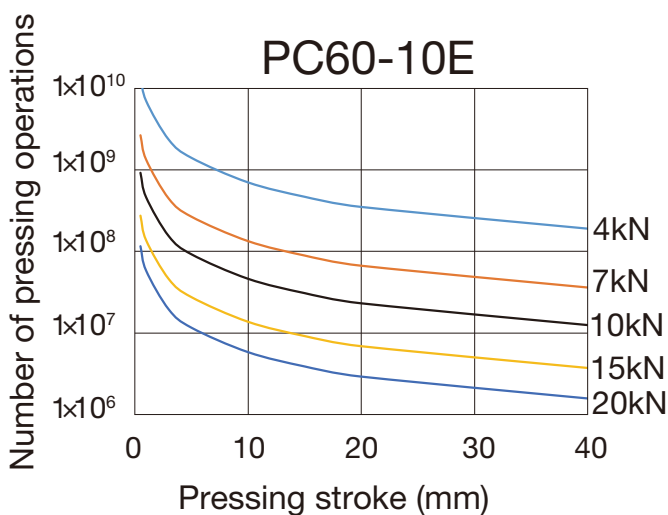
The operating life is a theoretical value under the following conditions.

Mounting orientation: vertical (rod reaching lower end)

Pressing direction : compression direction

Payload : at maximum load capacity

* The graph does not guarantee the pressing stroke operation for pressing load.



Service life will fluctuate depending on pressing load and pressing stroke.

The operating life is a theoretical value under the following conditions.

- Mounting orientation : Vertical (rod reaching lower end)
- Pressing direction : Compression direction
- Payload : at maximum load capacity

* The graph does not guarantee the pressing stroke operation for pressing load.

Maintenance

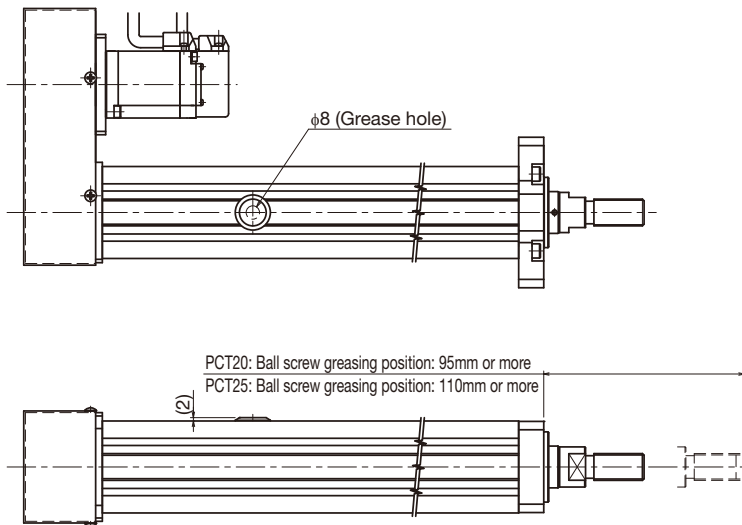
To maximize the performance of the actuator, periodic greasing is required. THK cylinder-type actuators have a grease hole.

* For details of greasing procedures, refer to the Instruction Manual.

PCT

Standard grease: AFB-LF

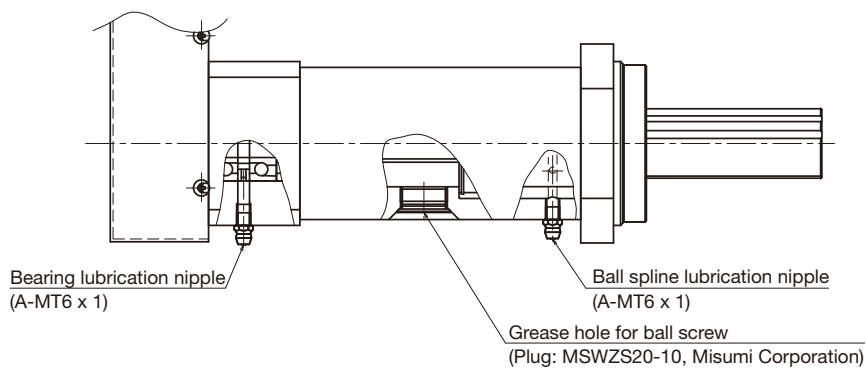
To grease the ball screw portion, remove the plug and apply the grease directly to the ball screw shaft.



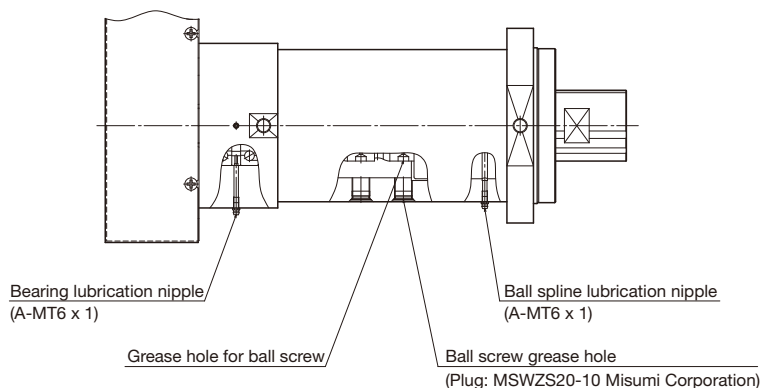
PC

Standard grease: L500

PC30 - 60H: To grease the ball screw portion, remove the plug and apply the grease directly to the ball screw shaft.



PC80L - 80H: To grease the ball screw portion, remove the plug and apply the grease via the ball screw grease hole.



MEMO

Lined area for writing a memo, consisting of 30 horizontal lines.



Precautions on Use

● Operation

- Do not unnecessarily disassemble the actuator or control devices. Doing so may allow foreign objects to enter or reduce functionality.
- Do not drop or knock the actuator or control devices. Doing so may cause injury or damage the unit. If the product is dropped or impacted, functionality may be reduced even if there is no surface damage.

● Environment

Wrong environment can cause failures of the actuator and control devices. The best place to use the product is as follows:

- Actuator: A place with an ambient temperature from 0 to 40°C and humidity of from 20% to 80% RH that will not expose the product to freezing or condensation.
- Controller: A place with an ambient temperature from 0 to 40°C and humidity of no more than 90% RH that will not expose the product to freezing or condensation.
- A place free from corrosive gas and flammable gas.
- A place free from electrically conductive powder (such as iron powder), dust, oil mist, moisture, salt, and organic solvent.
- A place free from direct sunlight and radiant heat.
- A place free from strong electric and magnetic fields
- A place where vibration or impact is not transmitted to the unit.
- A place that is easily accessible for service and cleaning purposes.

● Safety Precautions

- When the actuator is in motion or about to be in motion, do not touch any moving parts. Do not go near the actuator when it is in motion.
- Before performing installation, adjustment, checking, or services regarding the actuator and the connected peripherals, ensure that all power is disconnected. In addition, take countermeasures to prevent anyone other than the operator from turning on the power.
- If two or more people are involved in the operation, confirm the procedures such as sequences, signs, and abnormalities in advance, and appoint another person for monitoring the operation.
- Before operation, please read thoroughly and obey "Manipulating industrial robots
- Safety" (JIS B8433) and "Ordinance on Industrial Safety and Health" (Ministry of Health, Labor and Welfare).
- Operation of the actuator over the torque limit value leads to damage of parts or injury. Please keep the torque limit settings of parameters within THK specifications.
- For folding type of PCT and PC, this product does not include a safety device to protect users when the timing belt is broken. The customer must provide a safety device.
- Although a stopper is installed inside the product, it is intended to limit the stroke and therefore may be damaged in case of a hard collision.
- PC is designed to accommodate load in the pressing direction. Applying a load in the tensile direction may shorten product life.
- With PCT, only an axial load is permissible.
- Please contact THK if a rotational torque or moment load is applied to the PC rod.
- The total weight of PC exceeds 20kg.
- When moving the product, use hanger bolts to raise and move the product. Do not use a hanger belt alone to raise the product.
- When moving the product vertically, such as for installation, use two bolts at the motor side and the rod side. When moving it horizontally, use two or four bolts at the motor side and the rod side.
- Some models may tilt when raised, due to unbalanced center of gravity.

● Storage

When storing the actuator, enclose it in a package designated by THK and store it in a horizontal position away from abnormally high or low temperatures and high humidity.

- When storing the control devices, avoid abnormally high or low temperatures and high humidity.

● Lubrication

- In order to effectively use the actuator, lubrication is required. Insufficient lubrication may increase abrasion on moving parts and shorten service life.
- Do not use a mix of lubricants with different physical properties.
- Please contact THK if using special lubricants.
- The greasing interval may vary depending on the usage conditions, so THK recommends determining a greasing interval during the initial inspection.



Press Series PCT/PC

- The actual products may differ from the pictures and photographs in this catalog.
- Outward appearances and specifications are subject to change without notification for the purpose of improvement.
- Although great care has been taken in the production of this catalog, THK will not take any responsibility for damage resulting from typographical errors or omissions.
- In exporting our products and technology, or selling them for the purpose of export, THK has a basic policy of observing laws relating to foreign exchange, trade and other laws. For export of THK products as single items, please contact THK in advance.

All rights reserved.

THK CO., LTD.

Head Office 3-11-6 Nishigotanda, Shinagawa-ku, Tokyo 141-8503 JAPAN
International Sales Department Phone:+81-3-5434-0351 Fax:+81-3-5434-0353
Global site : <http://www.thk.com/>

NORTH AMERICA

- THK America, Inc.
● HEADQUARTERS
Phone:+1-847-310-1111 Fax:+1-847-310-1271
● CHICAGO OFFICE
Phone:+1-847-310-1111 Fax:+1-847-310-1182
● NORTH EAST OFFICE
Phone:+1-631-244-1565 Fax:+1-631-244-1565
● ATLANTA OFFICE
Phone:+1-770-840-7990 Fax:+1-770-840-7897
● LOS ANGELES OFFICE
Phone:+1-949-955-3145 Fax:+1-949-955-3149
● SAN FRANCISCO OFFICE
Phone:+1-925-455-8948 Fax:+1-925-455-8965
● DETROIT OFFICE
Phone:+1-248-858-9330 Fax:+1-248-858-9455
● TORONTO OFFICE
Phone:+1-905-820-7800 Fax:+1-905-820-7811

SOUTH AMERICA

THK BRAZIL INDUSTRIA E COMERCIO LTDA.
Phone:+55-11-3767-0100 Fax:+55-11-3767-0101

EUROPE

- THK GmbH
● EUROPEAN HEADQUARTERS
Phone:+49-2102-7425-555 Fax:+49-2102-7425-556
● DÜSSELDORF OFFICE
Phone:+49-2102-7425-0 Fax:+49-2102-7425-299
● STUTTGART OFFICE
Phone:+49-7141-4988-500 Fax:+49-7141-4988-888
● U.K. OFFICE
Phone:+44-1384-47-1550 Fax:+44-1384-47-1551
● ITALY OFFICE
Phone:+39-02-9901-1801 Fax:+39-02-9901-1881

● SWEDEN OFFICE

- Phone:+46-8-445-7630 Fax:+46-8-445-7639
● AUSTRIA OFFICE
Phone:+43-7229-51400 Fax:+43-7229-51400-79
● SPAIN OFFICE
Phone:+34-93-652-5740 Fax:+34-93-652-5746
● TURKEY OFFICE
Phone:+90-216-362-4050 Fax:+90-216-569-7150
● PRAGUE OFFICE
Phone:+420-2-41025-100 Fax:+420-2-41025-199
● MOSCOW OFFICE
Phone:+7-495-649-80-47 Fax:+7-495-649-80-44
THK Europe B.V.
● EINDHOVEN OFFICE
Phone:+31-040-290-9500 Fax:+31-040-290-9599
THK France S.A.S.
● PARIS OFFICE
Phone:+33-1-7425-3800 Fax:+33-1-7425-3799

CHINA

- THK (CHINA) CO.,LTD.
● HEADQUARTERS
Phone:+86-411-8733-7111 Fax:+86-411-8733-7000
● SHANGHAI OFFICE
Phone:+86-21-6219-3000 Fax:+86-21-6219-9890
● BEIJING OFFICE
Phone:+86-10-8441-7277 Fax:+86-10-6590-3557
● CHENGDU OFFICE
Phone:+86-28-8526-8025 Fax:+86-28-8525-6357
● GUANGZHOU OFFICE
Phone:+86-20-8523-8418 Fax:+86-20-3801-0456
● SHENZHEN OFFICE
Phone:+86-755-2642-9587 Fax:+86-755-2642-9604

● XIAN OFFICE

- Phone:+86-29-8834-1712 Fax:+86-29-8834-1710
THK (SHANGHAI) CO.,LTD.
Phone:+86-21-6275-5280 Fax:+86-21-6219-9890

TAIWAN

- THK TAIWAN CO.,LTD.
● TAIPEI HEAD OFFICE
Phone:+886-2-2888-3818 Fax:+886-2-2888-3819
● TAICHUNG OFFICE
Phone:+886-4-2359-1505 Fax:+886-4-2359-1506
● TAINAN OFFICE
Phone:+886-6-289-7668 Fax:+886-6-289-7669

KOREA

- SEOUL REPRESENTATIVE OFFICE
Phone:+82-2-3468-4351 Fax:+82-2-3468-4353

SINGAPORE

- THK LM System Pte. Ltd.
Phone:+65-6884-5500 Fax:+65-6884-5550

THAILAND

- THK RHYTHM(THAILAND) CO., LTD. LM System Division
● Bangkok Branch
Phone:+66-2751-3001 Fax:+66-2751-3003

INDIA

- THK India Pvt. Ltd.
● HEADQUARTERS & Bangalore Branch
Phone:+91-80-2340-9934 Fax:+91-80-2340-9937
● Pune Branch
Phone:+91-20-4120-8742
● Chennai Branch
Phone:+91-44-4042-3132
● Ahmedabad Branch
Phone:+91-79-6134-4925
● Delhi Branch
Phone:+91-12-4676-8695